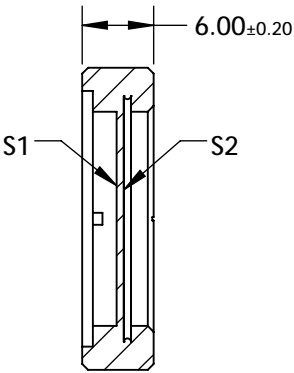
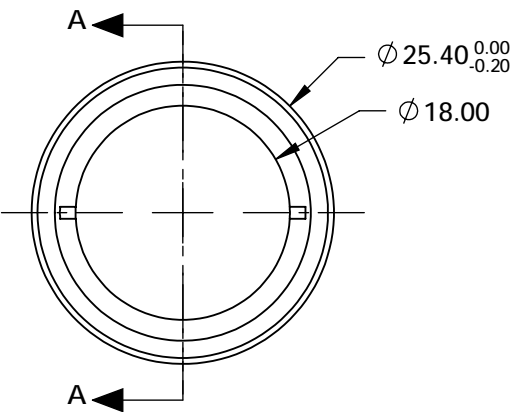


NOTES:

1. SUBSTRATE:  
Crystalline Quartz
2. COATING (APPLY ACROSS COATING APERTURE):  
S1 & S2: R(AVG) <0.3%  
  
DAMAGE THRESHOLD,  
PULSED: >20 J/cm<sup>2</sup>, 10ns @ 10Hz @ 1064nm
3. SURFACE S1 TO BE PARALLEL TO SURFACE S2 TO WITHIN <3 ARCSEC
4. RETARDANCE:  $\lambda/2 \pm \lambda/150$  @ 20°C  
RETARDANCE ORDER: 1st
5. DESIGN WAVELENGTH: 355nm
6. TRANSMITTED WAVEFRONT: < $\lambda/10$  @ 632.8nm
7. ROHS: COMPLIANT

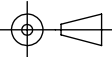


SECTION A-A

**FOR INFORMATION ONLY:  
DO NOT MANUFACTURE  
PARTS TO THIS DRAWING**

SPECIFICATIONS SUBJECT TO CHANGE WITHOUT NOTICE  
DIMENSIONS ARE FOR REFERENCE ONLY

**EO**® Edmund Optics®

	S1	S2	THIRD ANGLE PROJECTION 		TITLE	25.4mm Dia., 355nm, $\lambda/2$ High Energy Waveplate	
SURFACE QUALITY	20-10	20-10	ALL DIMS IN	mm	DWG NO	39165	SHEET 1 OF 1
CLEAR APERTURE	Ø18.00	Ø18.00					