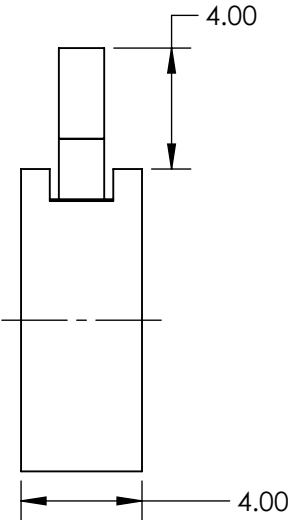
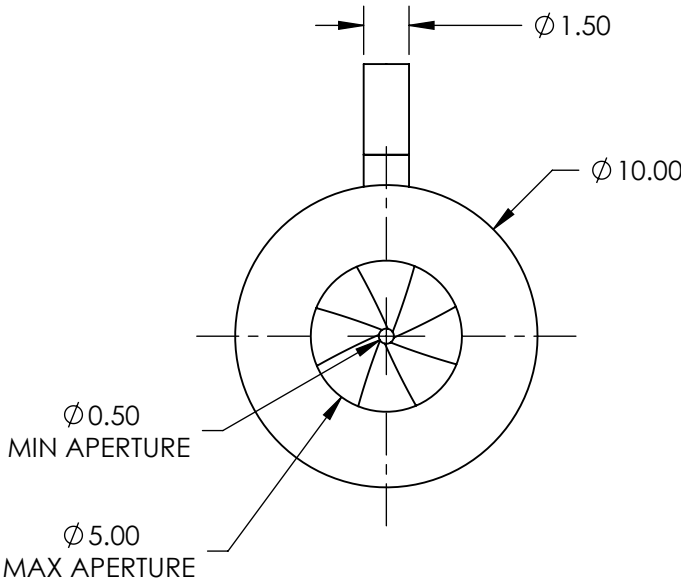


NOTES:

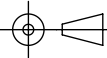
- 1. CONSTRUCTION:
Anodized Aluminum Alloy, Burnished Spring Steel Leaves
- 2. NUMBER OF LEAVES: 8
- 3. OPERATING TEMPERATURE (°C): <250
- 4. ROHS: COMPLIANT



SPECIFICATIONS SUBJECT TO CHANGE WITHOUT NOTICE
DIMENSIONS ARE FOR REFERENCE ONLY

**FOR INFORMATION ONLY:
DO NOT MANUFACTURE
PARTS TO THIS DRAWING**

EO[®] Edmund Optics[®]

| | | | | |
|--------------------------------------------------------------------------------------------------------------|----|--------|--------------------------------------------------------|--------------|
| THIRD ANGLE PROJECTION  | | TITLE | 10mm Outer Dia., Burnished Steel Leaves Iris Diaphragm | |
| ALL DIMS IN | mm | DWG NO | 57578 | SHEET 1 OF 1 |