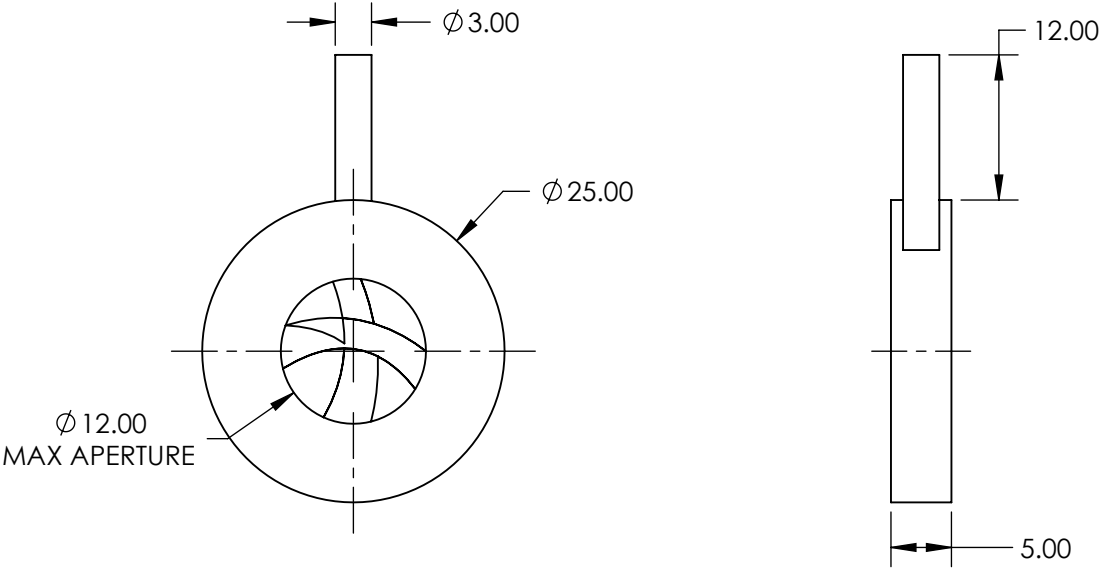


NOTES:

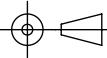
- 1. CONSTRUCTION:  
Anodized Aluminum Alloy, Burnished Leaves
- 2. NUMBER OF LEAVES: Two sets of 6
- 3. OPERATING TEMPERATURE (°C): <250
- 4. ROHS: COMPLIANT



SPECIFICATIONS SUBJECT TO CHANGE WITHOUT NOTICE  
DIMENSIONS ARE FOR REFERENCE ONLY

**FOR INFORMATION ONLY:  
DO NOT MANUFACTURE  
PARTS TO THIS DRAWING**

**Edmund Optics®**

THIRD ANGLE PROJECTION 		TITLE	25mm Outer Dia., Zero Aperture, Burnished Steel Leaves	
ALL DIMS IN	mm	DWG NO	57587	SHEET 1 OF 1