
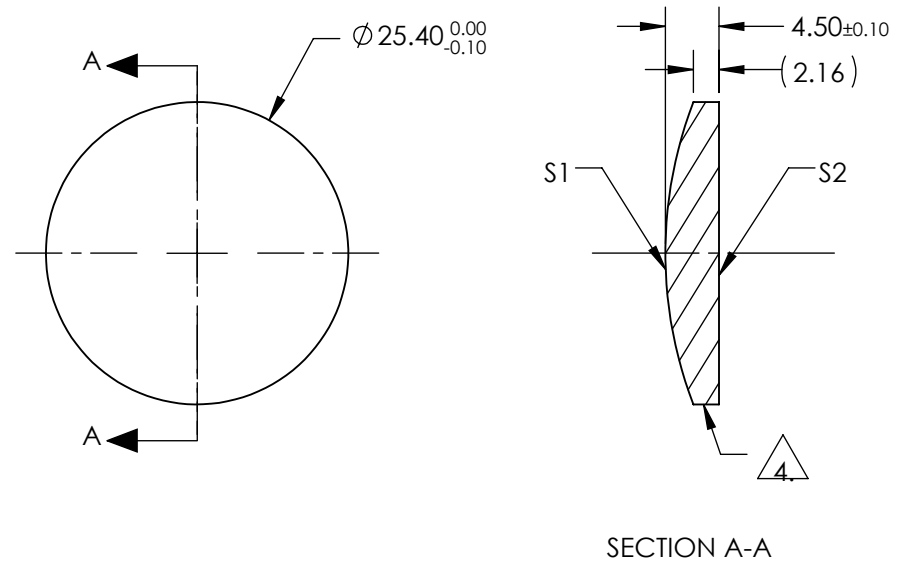



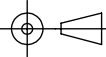
NOTES:

- SUBSTRATE:
II-VI Infrared ZnSe
- CENTERING TOLERANCE:
EDGE THICKNESS VARIATION MEASURED AT THE CLEAR APERTURE OF S1
NOT TO EXCEED 12.7μm
- COATING (APPLY ACROSS COATING APERTURE)
BBAR (3000-12000nm)
S1 & S2: R(AVG) ≤3.0% @ 3 - 12μm
-  FINE GROUND SURFACE
- POWER, IRREGULARITY, AND SURFACE QUALITY SPECIFICATIONS APPLY
ACROSS CLEAR APERTURE
- WAVELENGTH RANGE: 3000 - 12000nm
- SURFACE ROUGHNESS: <50 Å
- ROHS: COMPLIANT

**FOR INFORMATION ONLY:
DO NOT MANUFACTURE
PARTS TO THIS DRAWING**



SPECIFICATIONS SUBJECT TO CHANGE WITHOUT NOTICE
DIMENSIONS ARE FOR REFERENCE ONLY

	S1	S2				
SHAPE	CONVEX	PLANO				
RADIUS	35.628	INFINITY	EFL (AT 10.6 microns)	25.40	 Edmund Optics®	
SURFACE QUALITY	40-20	40-20	BFL (AT 10.6 microns)	23.53		
CLEAR APERTURE	90%	90%	THIRD ANGLE PROJECTION 		TITLE	25.4mm Dia. x 25.4mm FL, 3-12μm BBAR Coated, ZnSe Plano-Convex Lens
POWER at 10.6μm	λ/10	λ/10			DWG NO	11423
IRREGULARITY at 10.6μm	λ/20	λ/20				SHEET 1 OF 1
BEVEL	PROTECTIVE AS NEEDED	PROTECTIVE AS NEEDED	ALL DIMS IN	mm		