

II-VI Infrared ZnSe

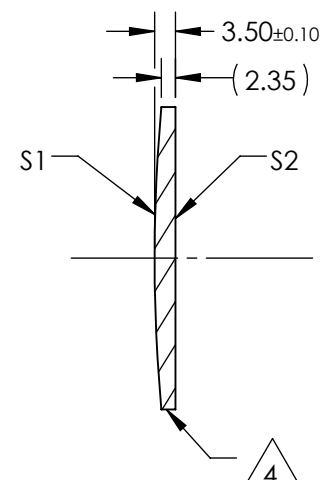
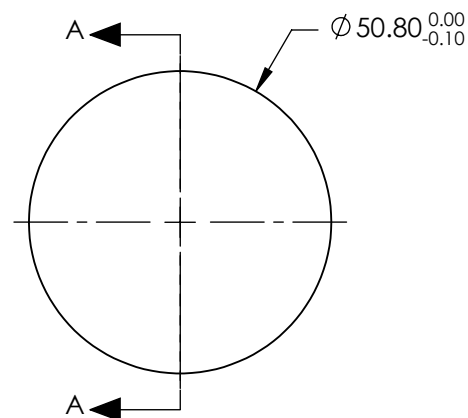
- BBAR (3000-12000nm)

S1 & S2: R(AVG) $\leq 3.0\%$ @ 3 - 12 μm

4. FINE GROUND SURFACE

7. SURFACE ROUGHNESS: $<50 \text{ \AA}$

8. ROHS: COMPLIANT



SECTION A-A

**FOR INFORMATION ONLY:
DO NOT MANUFACTURE
PARTS TO THIS DRAWING**

	S1	S2
SHAPE	CONVEX	PLANO
RADIUS	280.540	INFINITY
SURFACE QUALITY	40-20	40-20
CLEAR APERTURE	90%	90%
POWER at 10.6μm	λ/10	λ/10
IRREGULARITY at 10.6μm	λ/20	λ/20
BEVEL	PROTECTIVE AS NEEDED	PROTECTIVE AS NEEDED

EFL (AT 10.6 microns)	200.00
BFL (AT 10.6 microns)	198.55

THIRD ANGLE PROJECTION

ALL DIMS IN	mm
-------------	----

 Edmund Optics®

TITLE

50.8mm Dia. x 200mm FL, 3-12 μ m BBAR
Coated, ZnSe Plano-Convex Lens

DWG NO

11434

SHEET
1 OF 1