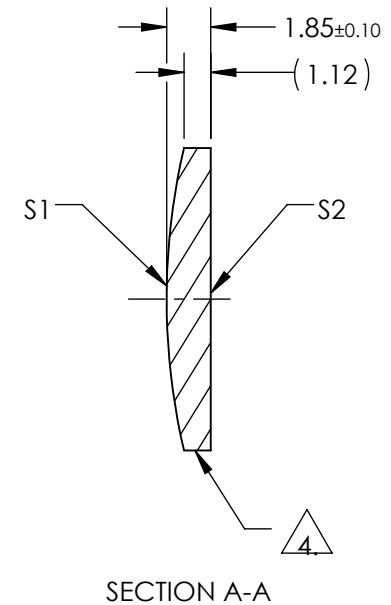
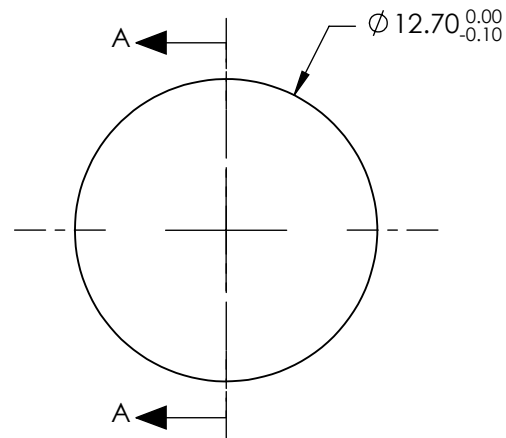



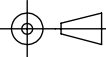
NOTES:

1. SUBSTRATE:
II-VI Infrared ZnSe
2. CENTERING TOLERANCE:
EDGE THICKNESS VARIATION MEASURED AT THE CLEAR APERTURE OF S1
NOT TO EXCEED 50.8μm
3. COATING (APPLY ACROSS COATING APERTURE)
BBAR (8000-12000nm)
S1 & S2: R(AVG) <0.5% @ 8 - 12μm
4. FINE GROUND SURFACE
5. POWER, IRREGULARITY, AND SURFACE QUALITY SPECIFICATIONS APPLY
ACROSS CLEAR APERTURE
6. WAVELENGTH RANGE: 8000 - 12000nm
7. SURFACE ROUGHNESS: <50 Å
8. ROHS: COMPLIANT



**FOR INFORMATION ONLY:
DO NOT MANUFACTURE
PARTS TO THIS DRAWING**

SPECIFICATIONS SUBJECT TO CHANGE WITHOUT NOTICE
DIMENSIONS ARE FOR REFERENCE ONLY

| | S1 | S2 | | | | |
|------------------------|----------------------|----------------------|--|-------|---|---|
| SHAPE | CONVEX | PLANO | | | | |
| RADIUS | 28.054 | INFINITY | EFL (AT 10.6 microns) | 20.00 |  Edmund Optics® | |
| SURFACE QUALITY | 40-20 | 40-20 | BFL (AT 10.6 microns) | 19.23 | | |
| CLEAR APERTURE | 90% | 90% | THIRD ANGLE PROJECTION  | | TITLE | 12.7mm Dia. x 20mm FL, 8-12μm BBAR Coated, ZnSe Plano-Convex Lens |
| POWER at 10.6μm | λ/10 | λ/10 | | | DWG NO | 39543 |
| IRREGULARITY at 10.6μm | λ/20 | λ/20 | | | | |
| BEVEL | PROTECTIVE AS NEEDED | PROTECTIVE AS NEEDED | ALL DIMS IN | mm | | SHEET 1 OF 1 |