

NOTES:

1. SUBSTRATE:
FUSED SILICA
2. SURFACE S2 TO BE PARALLEL TO S1 TO WITHIN <3 ARCMIN
3. COATING (APPLY ACROSS COATING APERTURE)

S1: T(ABS) > 70% @ 266nm @ 45° AOI
R(ABS) > 99% @ 532nm @ 45° AOI
R(ABS) > 99% @ 1064nm @ 45° AOI

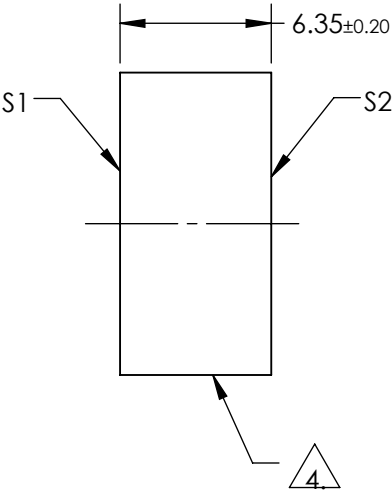
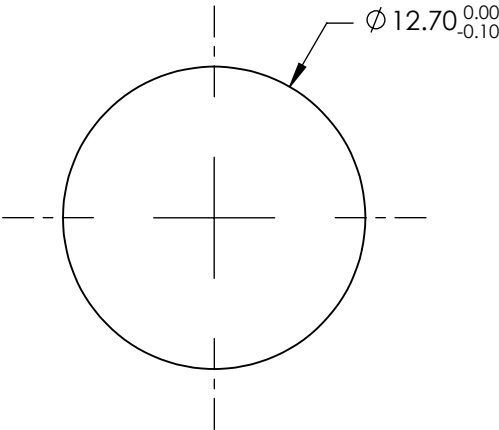
DAMAGE THRESHOLD, PULSED:
7.5 J/cm² @ 20ns, 20Hz @ 1064nm
5 J/cm² @ 20ns, 20Hz @ 532nm
1 J/cm² @ 20ns, 20Hz @ 266nm

S2: R(ABS) < 1.0% @ 266nm @ 45° AOI

DAMAGE THRESHOLD, PULSED:
1 J/cm² @ 20ns, 20Hz @ 266nm

△ FINE GRIND SURFACE

5. ROHS COMPLIANT




**FOR INFORMATION ONLY:
DO NOT MANUFACTURE
PARTS TO THIS DRAWING**

SPECIFICATIONS SUBJECT TO CHANGE WITHOUT NOTICE
DIMENSIONS ARE FOR REFERENCE ONLY

	S1	S2
SHAPE	PLANO	PLANO
SURFACE ACCURACY P-V AT 632.8nm	0.10 WAVE	0.10 WAVE
SURFACE QUALITY	10-5	10-5
CLEAR APERTURE	Ø11.43	Ø11.43
COATING APERTURE	Ø11.43	Ø11.43
BEVEL	PROTECTIVE AS NEEDED	PROTECTIVE AS NEEDED

THIRD ANGLE PROJECTION	
ALL DIMS IN	mm

 Edmund Optics®			
TITLE		Ø12.7mm HS 266T/532, 1064R HARMONIC BEAMSPLITTER	
DWG NO		11547	SHEET 1 OF 1