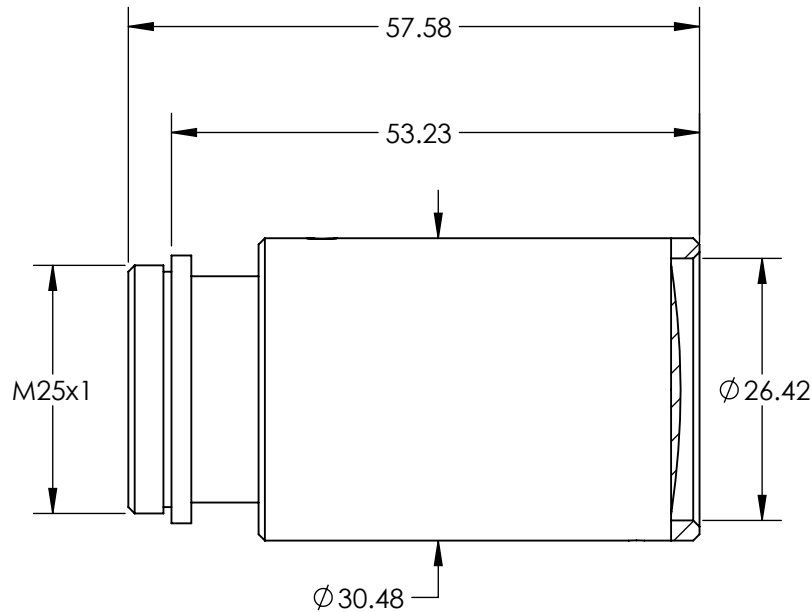
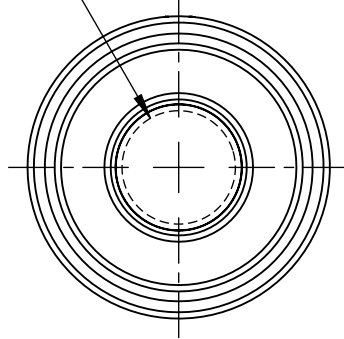


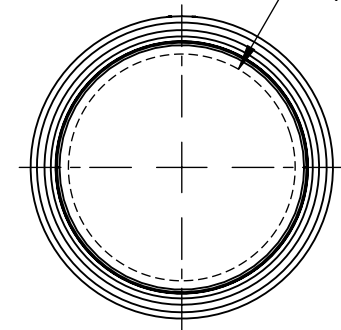
NOTES:

1. SUBSTRATE:  
ZnSe
2. COATING (APPLY ACROSS COATING APERTURE)  
HIGH-EFFICIENCY ANTI-REFLECTIVE COATING (10.6 $\mu$ m)  
R(ABS) <0.2% @ 10.6 $\mu$ m @ 0° AOI
3. ROHS COMPLIANT

Ø 11.43  
ENTRANCE  
APERTURE



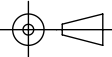
Ø 22.86  
EXIT  
APERTURE



SPECIFICATIONS SUBJECT TO CHANGE WITHOUT NOTICE  
DIMENSIONS ARE FOR REFERENCE ONLY

**FOR INFORMATION ONLY:  
DO NOT MANUFACTURE  
PARTS TO THIS DRAWING**

**EO**® Edmund Optics®

THIRD ANGLE PROJECTION 		TITLE	5X, CO2 Beam Expander	
ALL DIMS IN	mm	DWG NO	11365	SHEET 1 OF 1