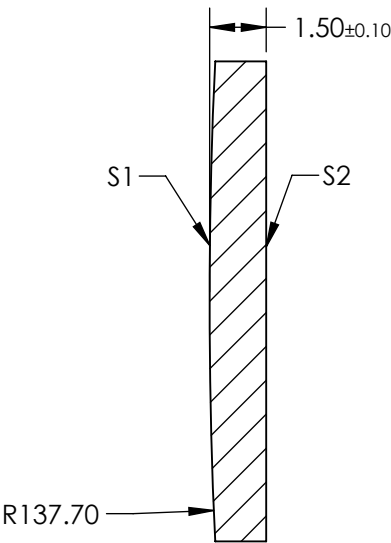
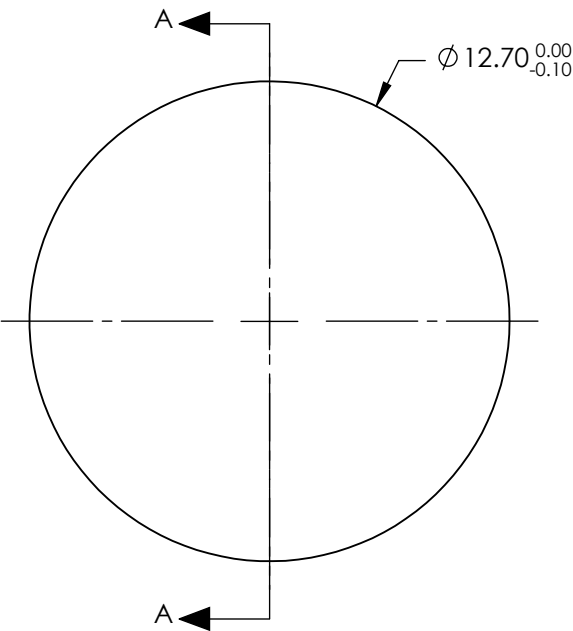


- NOTES:
- 1. SUBSTRATE: FUSED SILICA
  - 2. COATING:  
S1 & S2: R(ABS) <0.1% @ 950 - 1150nm
  - 3. CENTERING: < 3 ARCMIN
  - 4. RoHS: COMPLIANT


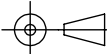
**FOR INFORMATION ONLY:  
DO NOT MANUFACTURE  
PARTS TO THIS DRAWING**



SECTION A-A

SPECIFICATIONS SUBJECT TO CHANGE WITHOUT NOTICE  
DIMENSIONS ARE FOR REFERENCE ONLY

	S1	S2
SHAPE	CONVEX	PLANO
SURFACE QUALITY	20-10	20-10
CLEAR APERTURE	Ø11.43	Ø11.43
BEVEL	PROTECTIVE AS NEEDED	PROTECTIVE AS NEEDED

EFL: 300.35 mm		<div><div></div><div>Edmund Optics®</div></div>		
BFL: 299.32 mm				
THIRD ANGLE PROJECTION 		TITLE	12.7mm Diameter x 300mm FL, 9501150nm Coated, Ultrafast Thin PCX Lens	
ALL DIMS IN	mm	DWG NO	11640	SHEET 1 OF 1