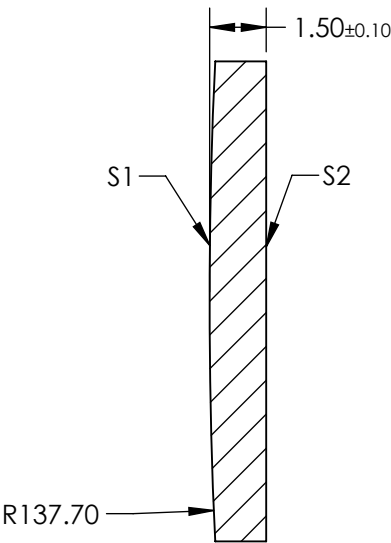
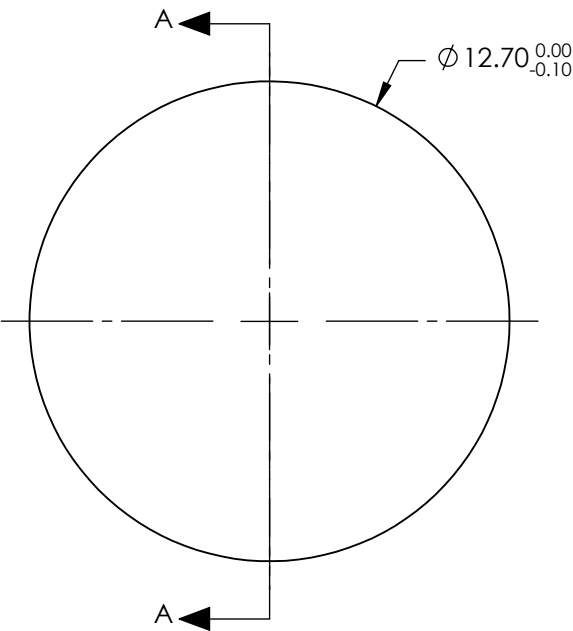


NOTES:

- 1. SUBSTRATE: FUSED SILICA
- 2. COATING:
S1 & S2: R(ABS) <0.1% @ 700 - 900nm
- 3. CENTERING: < 3 ARCMIN
- 4. RoHS: COMPLIANT


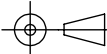
FOR INFORMATION ONLY:
DO NOT MANUFACTURE
PARTS TO THIS DRAWING



SECTION A-A

SPECIFICATIONS SUBJECT TO CHANGE WITHOUT NOTICE
DIMENSIONS ARE FOR REFERENCE ONLY

| | S1 | S2 |
|-----------------|----------------------|----------------------|
| SHAPE | CONVEX | PLANO |
| SURFACE QUALITY | 20-10 | 20-10 |
| CLEAR APERTURE | Ø11.43 | Ø11.43 |
| BEVEL | PROTECTIVE AS NEEDED | PROTECTIVE AS NEEDED |

| | | | |
|---|----|---|---|
| EFL: 300.35 mm | | <div> Edmund Optics®</div> | |
| BFL: 299.32 mm | | | |
| <div>THIRD ANGLE PROJECTION</div>  | | TITLE | 12.7mm Diameter x 300mm FL, 700900nm Coated, Ultrafast Thin PCX Lens |
| ALL DIMS IN | mm | DWG NO | 11659 |
| | | | SHEET 1 OF 1 |