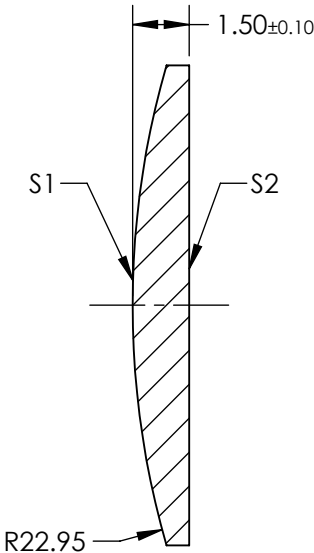
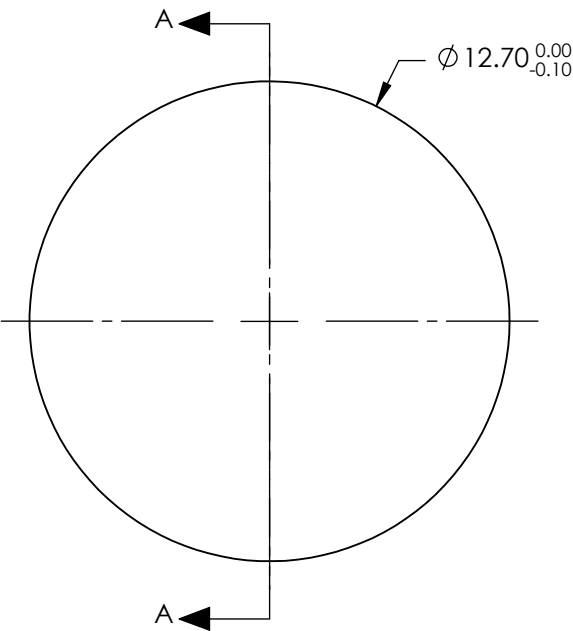


- NOTES:
- 1. SUBSTRATE: FUSED SILICA
 - 2. COATING:
S1 & S2: R(ABS) <0.5% @ 370 - 550nm @ 45° AOI
 - 3. CENTERING: < 3 ARCMIN
 - 4. RoHS: COMPLIANT

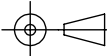
**FOR INFORMATION ONLY:
DO NOT MANUFACTURE
PARTS TO THIS DRAWING**



SECTION A-A

SPECIFICATIONS SUBJECT TO CHANGE WITHOUT NOTICE
DIMENSIONS ARE FOR REFERENCE ONLY

| | S1 | S2 |
|-----------------|----------------------|----------------------|
| SHAPE | CONVEX | PLANO |
| SURFACE QUALITY | 20-10 | 20-10 |
| CLEAR APERTURE | Ø11.43 | Ø11.43 |
| BEVEL | PROTECTIVE AS NEEDED | PROTECTIVE AS NEEDED |

| | | | | |
|---|----|--|---|-----------------|
| EFL: 50.06mm | | <div><div><div></div><div></div></div>[®] Edmund Optics[®]</div> | | |
| BFL: 49.03mm | | | | |
| THIRD ANGLE PROJECTION  | | TITLE | 12.7mm Diameter x 50mm FL, 370-550nm Coated, Ultrafast Thin PCX Lens | |
| ALL DIMS IN | mm | DWG NO | 11671 | SHEET 1 OF 1 |