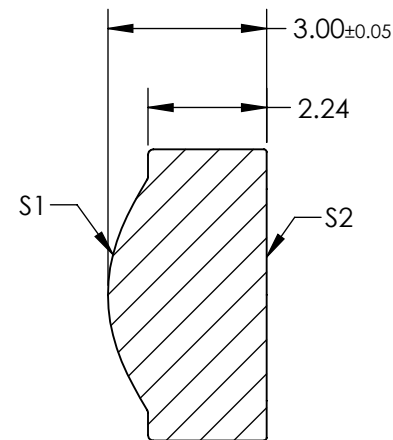
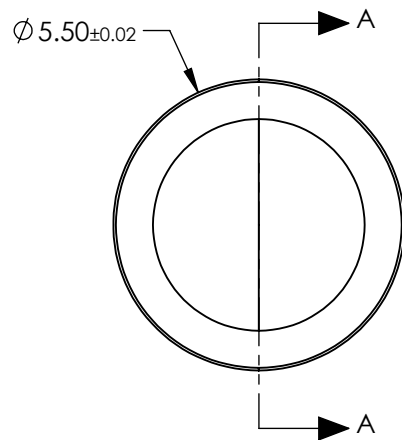


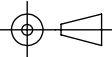
- NOTES:
- 1. SUBSTRATE:
BLACK DIAMOND™ BD-2 (Ge28Sb12Se60)
 - 2. NUMERICAL APERTURE: 0.85
 - 3. COATING:
R(AVG) <1.0% @ 1.8 - 3.0µm
 - 4. FOCAL LENGTH TOLERANCE: ±1%
 - 5. RoHS: COMPLIANT



SECTION A-A

**FOR INFORMATION ONLY:
DO NOT MANUFACTURE
PARTS TO THIS DRAWING**

SPECIFICATIONS SUBJECT TO CHANGE WITHOUT NOTICE
DIMENSIONS ARE FOR REFERENCE ONLY

	S1	S2	<div><div><div>THIRD ANGLE PROJECTION</div></div><div>Edmund Optics®</div></div>			
SHAPE	CONVEX	PLANO				
SURFACE QUALITY	80-50	80-50	ALL DIMS IN	mm	TITLE	Infrared Asphere 0.85NA, 1.87mm FL, 1.8-3.0µm AR Coated
MIN CLEAR APERTURE	Ø4	Ø4			DWG NO	66564
BEVEL MAX FACE	PROTECTIVE AS NEEDED	PROTECTIVE AS NEEDED				SHEET 1 OF 1