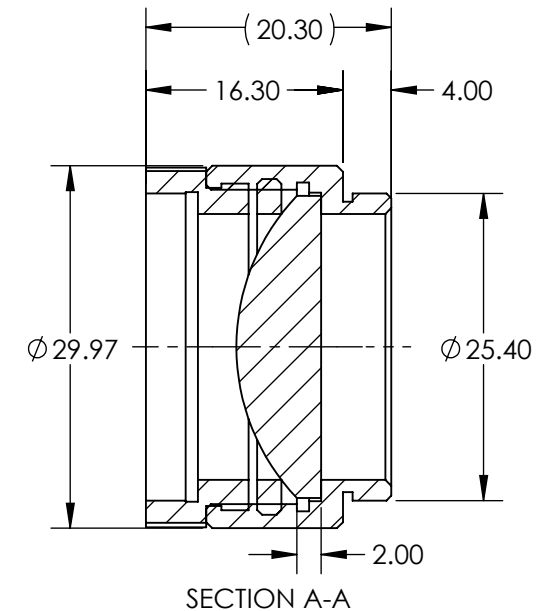
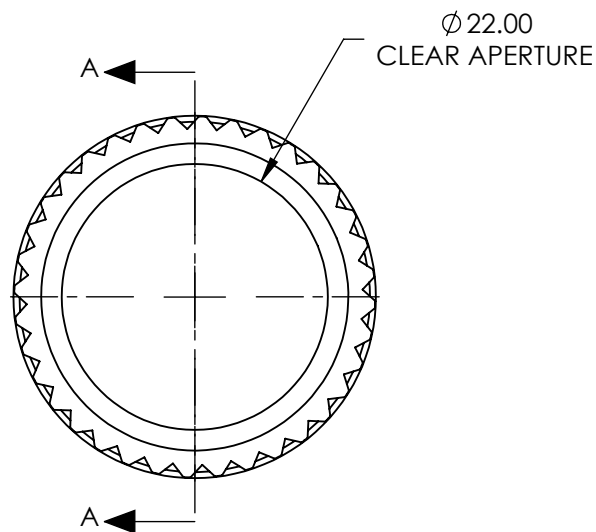


NOTES:

1. SUBSTRATE:
N-BK7
2. ROHS COMPLIANT
3. COATING (APPLY ACROSS COATING APERTURE)
S1 & S2: MgF2 (400-700nm)
R(AVG) $\leq 1.75\%$ @ 400 - 700nm
4. FOCAL LENGTH (EFL): $35.00 \pm 1\%$
FOCAL LENGTH (BFL) FROM MECHANICAL HOUSING: 24.62
5. LENS INCLUDED: #45-146
MOUNT INCLUDED: #56-353

**FOR INFORMATION ONLY:
DO NOT MANUFACTURE
PARTS TO THIS DRAWING**



SPECIFICATIONS SUBJECT TO CHANGE WITHOUT NOTICE
DIMENSIONS ARE FOR REFERENCE ONLY

	S1	S2
SHAPE	CONVEX	PLANO
RADIUS	18.11	INFINITY
SURFACE QUALITY	40-20	40-20
POWER AT 632.8nm	1.5λ	1.5λ
IRREGULARITY AT 632.8nm	$\lambda/4$	$\lambda/4$



ALL DIMS IN

mm



Edmund Optics®

TITLE

22mm CA, 35mm FL, Mounted MgF2 Coated
Plano-Convex Lens

DWG NO

12996

SHEET
1 OF 1