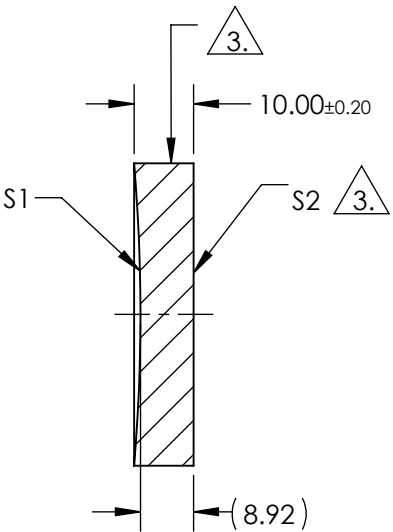
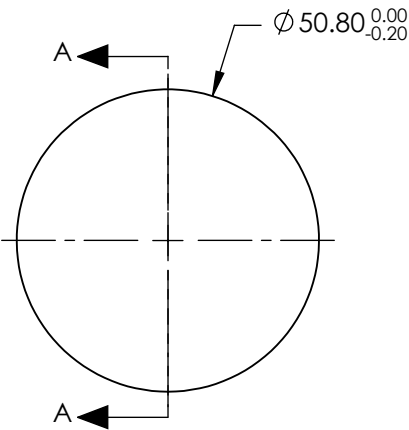


NOTES:

1. SUBSTRATE:  
FUSED SILICA
2. COATING (APPLY ACROSS CLEAR APERTURE)
- S1: Ultrafast-Enhanced Silver  
R(AVG) > 99% @ 600 - 1000nm @ 0° AOI  
Rs > 99% @ 540 - 1000nm @ 45° AOI  
Rp > 98.5% @ 730 - 870nm @ 45° AOI
- S2: NONE

3. FINE GRIND SURFACE

4. EFL (EFFECTIVE FOCAL LENGTH): 150.00mm



SECTION A-A

**FOR INFORMATION ONLY:  
DO NOT MANUFACTURE  
PARTS TO THIS DRAWING**

SPECIFICATIONS SUBJECT TO CHANGE WITHOUT NOTICE  
DIMENSIONS ARE FOR REFERENCE ONLY

	S1	S2
SHAPE	CONCAVE	PLANO
RADIUS	300.00	INFINITY
SURFACE QUALITY	20-10	N/A
CLEAR APERTURE	40.64mm	N/A
IRREGULARITY AT 632.8nm	0.15λ	N/A
BEVEL	PROTECTIVE AS NEEDED	PROTECTIVE AS NEEDED

THIRD ANGLE PROJECTION	
ALL DIMS IN	mm

 <b>Edmund Optics®</b>			
TITLE		600-1050nm, 50.8mm Dia. x 150mm EFL, Ultrafast-Enhanced Silver Concave Laser Mirror	
DWG NO		13070	SHEET 1 OF 1