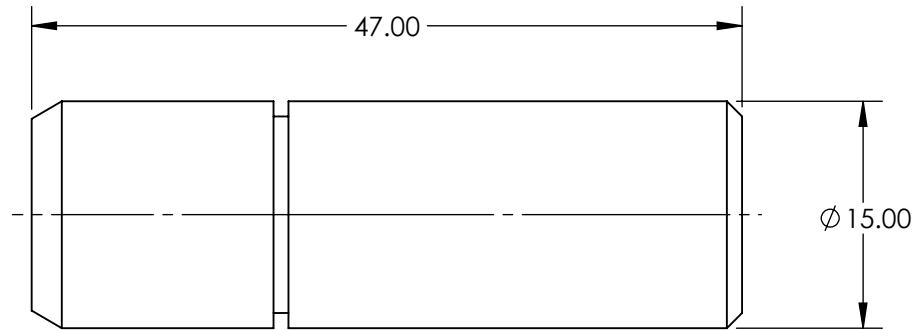


NOTES:
1. RoHS: COMPLIANT



**FOR INFORMATION ONLY:
DO NOT MANUFACTURE
PARTS TO THIS DRAWING**

SPECIFICATIONS SUBJECT TO CHANGE WITHOUT NOTICE
DIMENSIONS ARE FOR REFERENCE ONLY

DESIGN WAVELENGTH (nm)	635
OUTPUT POWER (mW)	4.5
BEAM DAIAMTER (mm)	6 x 2
FOCUS RANGE	35mm - ∞
COLOR	RED
LASER CLASS - CDRH	IIIa
MEAN TIME TO FAILURE @ 25° (HOURS)	>49,000
POINTING ACCURACY (mrad)	<5
POWER REQUIREMENT	5V DC ±5%
TYPE	DIODE
WAVELENGTH STABILITY (nm/°C)	0.25

EO® Edmund Optics®

THIRD ANGLE PROJECTION

TITLE

4.5mW 635nm Elliptical, Premier Laser Diode

ALL DIMS IN

mm

DWG NO

57110

SHEET
1 OF 1