

NOTES:

1. SUBSTRATE: GERMANIUM (Ge)
2. SURFACE S2 TO BE PARALLEL OT SURFACE S1 TO WITHIN 1 ARCMIN
3. ENVIRONMENTAL REQUIREMENTS:

S1: DLC COATING

ADHESION: PER MIL-M-13508C PARA 4.4.6
 ABRASION: SEVERE PER MIL-C-675C PARA 4.5.10
 HUMIDITY: PER MIL-C-675C PARA 4.5.8
 SALT SOLUBILITY: PER MIL-C-675C PARA 4.5.7
 SALT SPRAY: PER MIL-C-675C PARA 4.5.9
 TEMPERATURE CYCLE: PER MIL-M-13508C PARA 4.4.4
 WIPER: ≥5,000 WIPES OF SAND/SLURRY WITH NO REMOVAL

S2: BBAR COATING

ADHESION: PER MIL-C-48497 PARA 4.5.3.
 ABRASION: MODERATE PER MIL-C-48497 PARA 4.5.3.3
 HUMIDITY: PER MIL-C-48497 PARA 4.5.3.2
 TEMPERATURE: PER MIL-C-48497 PARA 4.5.4.1
 SOLUBILITY AND CLEANING: PER MIL-C-48497 PARA 4.5.4.2
 WATER SOLUBILITY: PER MIL-C-48497 PARA 4.5.5.3

4. REFLECTION AND TRANSMISSION PERFORMANCE ACROSS CLEAR APERTURE ON CENTER

S2: R(AVG) ≤0.5% FROM 8.0 - 12.0μm

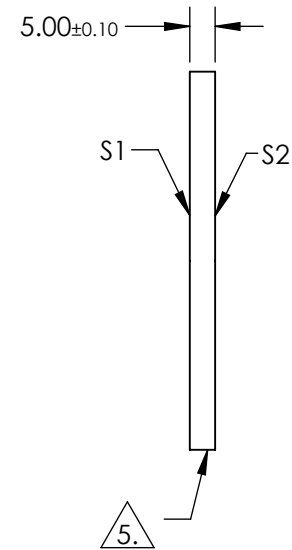
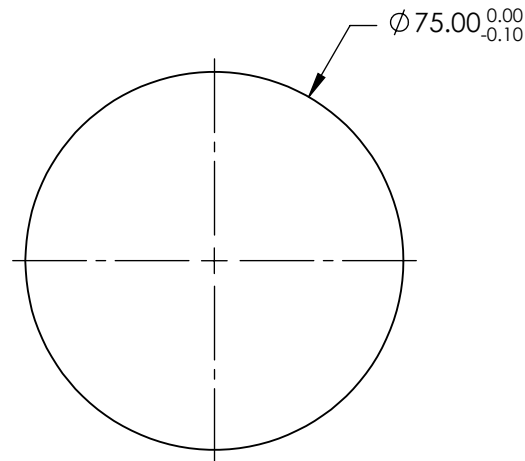
TRANSMISSION THROUGH COATED WINDOW:

T(AVG) ≥90% FROM 8.0 - 11.5μm
 T(AVG) ≥88% FROM 8.0 - 12.0μm

 FINE GRIND SURFACE

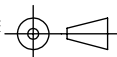
6. ROHS: COMPLIANT

**FOR INFORMATION ONLY:
 DO NOT MANUFACTURE
 PARTS TO THIS DRAWING**



SPECIFICATIONS SUBJECT TO CHANGE WITHOUT NOTICE
 DIMENSIONS ARE FOR REFERENCE ONLY

	S1	S2
SHAPE	PLANO	PLANO
SURFACE ACCURACY @ 10.6μm	$\lambda/10$	$\lambda/10$
SURFACE QUALITY	60-40	60-40
CLEAR APERTURE	$\phi 67.50$	$\phi 67.50$
BEVEL	PROTECTIVE AS NEEDED	PROTECTIVE AS NEEDED

THIRD ANGLE PROJECTION 

ALL DIMS IN mm

 **Edmund Optics®**

TITLE: $\phi 75\text{mm} \times 5\text{mm THK DLC COATED GERMANIUM WINDOW}$

DWG NO: 13799

SHEET 1 OF 1