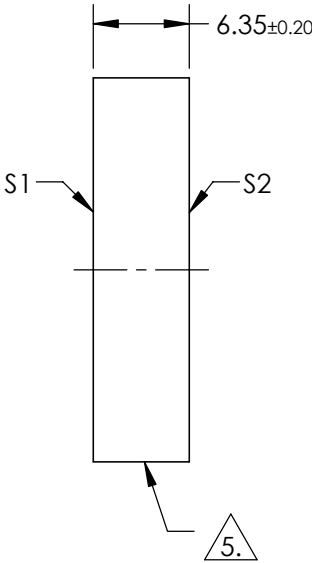
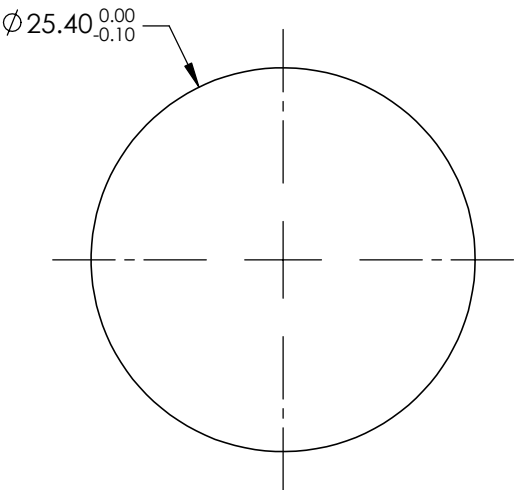


NOTES:


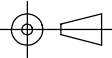
- 1. SUBSTRATE: FUSED SILICA
  - 2. RoHS: COMPLIANT
  - 3. SURFACE S2 TO BE PARALLEL TO SURFACE S1 TO WITHIN <3 ARCMIN
  - 4. COATING (APPLY ACROSS COATING APERTURE)  
S1: Rs(ABS) > 99.95% @ 532nm @ 45° AOI
- DAMAGE THRESHOLD,  
PULSED: 10 J/cm² @ 532nm, 20ns, 20Hz

5. FINE GRIND SURFACE



**FOR INFORMATION ONLY:  
DO NOT MANUFACTURE  
PARTS TO THIS DRAWING**

SPECIFICATIONS SUBJECT TO CHANGE WITHOUT NOTICE  
DIMENSIONS ARE FOR REFERENCE ONLY

	S1	S2	 Edmund Optics®			
SHAPE	PLANO	PLANO		TITLE	532nm, 45°, 25.4mm DIA., 6.35mm THICK, Nd:YAG IBS LASER LINE MIRROR	
SURFACE QUALITY	10-5	COMMERCIAL POLISH		DWG NO	34842	SHEET 1 OF 1
CLEAR APERTURE	Ø21.59	N/A				
BEVEL	PROTECTIVE AS NEEDED	PROTECTIVE AS NEEDED				
			ALL DIMS IN	mm		