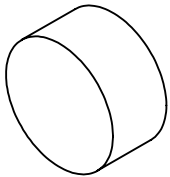


NOTES:

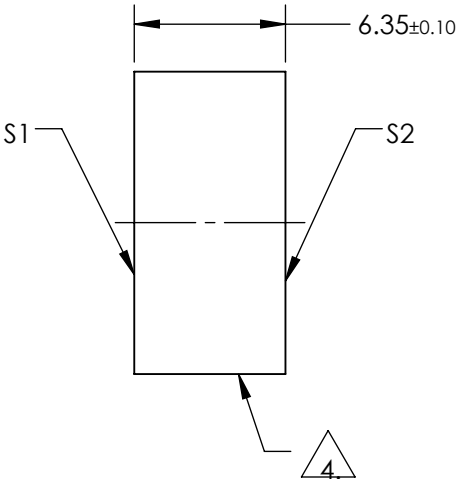
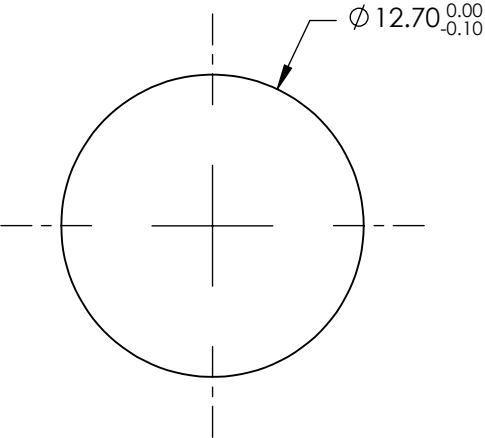
1. SUBSTRATE MATERIAL:
FUSED SILICA
2. SURFACE S2 TO BE PARALLEL TO SURFACE S1 <10 ARCSEC
3. COATING (APPLY ACROSS COATING APERTURE)
S1: ULTRAFAST LASER
Rs >99.95% @ 1000 - 1060nm
Rp >99.9% @ 1000 - 1060nm
- DAMAGE THRESHOLD,
PULSED: >0.1 J/cm2 @ 1030nm, 100fs
- S2: NONE
- GROUP DELAY DISPERSION: 0 ±20fs2 @ 1000 - 1060nm




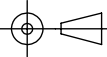
4. FINE GROUND SURFACE

5. RoHS: COMPLIANT

**FOR INFORMATION ONLY:
DO NOT MANUFACTURE
PARTS TO THIS DRAWING**



SPECIFICATIONS SUBJECT TO CHANGE WITHOUT NOTICE
DIMENSIONS ARE FOR REFERENCE ONLY

	S1	S2	 Edmund Optics®			
SHAPE	PLANO	PLANO		TITLE	1000 - 1060nm, 12.7mm DIA., ULTRAFAST MIRROR	
SURFACE FLATNESS	λ/8	N/A		DWG NO	14845	SHEET 1 OF 1
SURFACE QUALITY	10-5	COMMERCIAL POLISH				
CLEAR APERTURE (%)	>80	N/A				
BEVEL	PROTECTIVE AS NEEDED	PROTECTIVE AS NEEDED	ALL DIMS IN	mm		