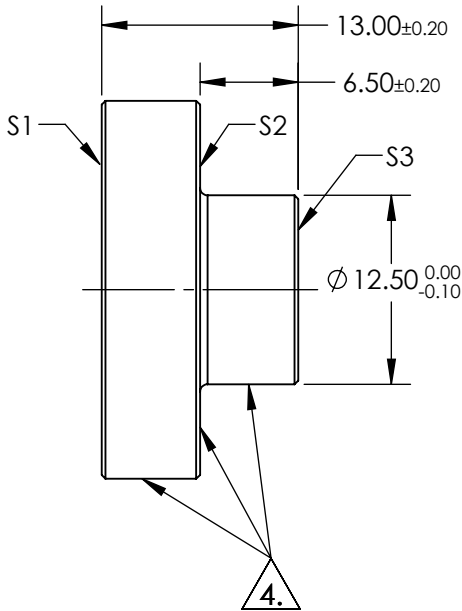
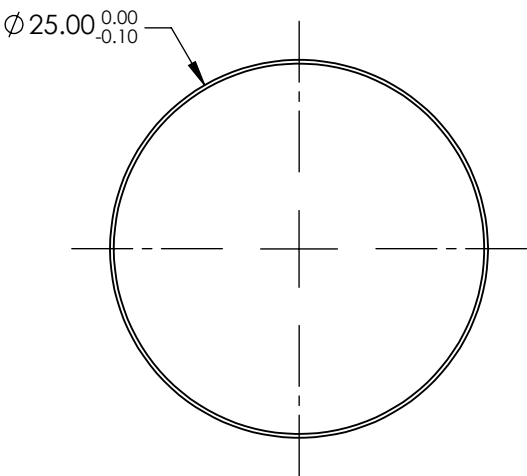


NOTES:

- 1. SUBSTRATE: FUSED SILICA
- 2. RoHS: COMPLIANT
- 3. COATING (APPLY ACROSS COATING APERTURE)
S1: R(AVG) >89% @ 250 - 450nm
R(AVG) >85% @ 250 - 700nm
S2 & S3: NONE

4. FINE GRIND SURFACE



**FOR INFORMATION ONLY:
DO NOT MANUFACTURE
PARTS TO THIS DRAWING**

SPECIFICATIONS SUBJECT TO CHANGE WITHOUT NOTICE
DIMENSIONS ARE FOR REFERENCE ONLY

	S1	S2	S3
SHAPE	PLANO	PLANO	PLANO
SURFACE QUALITY	20-10	FINE GRIND	COMMERCIAL POLISH
CLEAR APERTURE	Ø22.50	N/A	N/A
BEVEL	PROTECTIVE AS NEEDED	PROTECTIVE AS NEEDED	PROTECTIVE AS NEEDED



ALL DIMS IN mm

Edmund Optics®

TITLE

25mm DIA., UV ENHANCED ALUMINUM, λ/10
STEMMED MIRROR

DWG NO

14580

SHEET
1 OF 1