

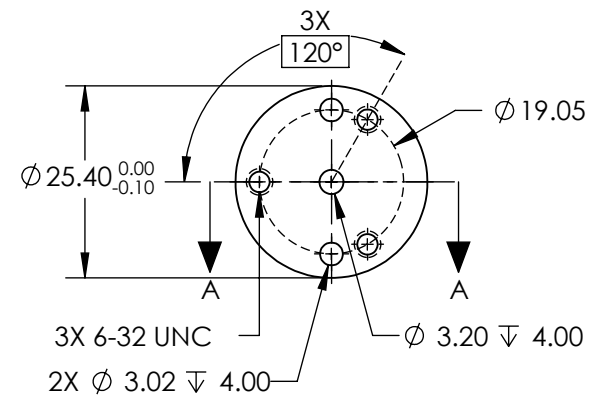
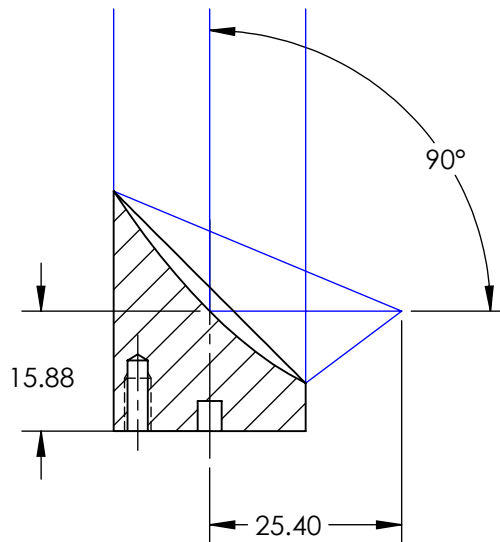
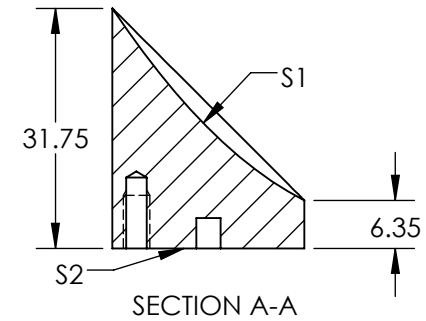
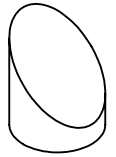
NOTES:

- SUBSTRATE MATERIAL:
ALUMINUM
- FINISH (EXCEPT SURFACE S1 & S2):
BLACK ANODIZED
- COATING (APPLY ACROSS CLEAR APERTURE)
S1: DIELECTRIC MIRROR (532nm)
R(AVG) >99.5% @ 532nm @ 45°

SURFACE ROUGHNESS: <50 Å RMS

- FOCAL LENGTH TOLERANCE: ±1%
- ROHS COMPLIANT

**FOR INFORMATION ONLY:
DO NOT MANUFACTURE
PARTS TO THIS DRAWING**



SPECIFICATIONS SUBJECT TO CHANGE WITHOUT NOTICE
DIMENSIONS ARE FOR REFERENCE ONLY

REV. A	S1
SURFACE FIGURE AT 632.8nm (RMS)	$\lambda/8$
CLEAR APERTURE	90%
SHAPE	PARABOLIC
BEVEL	PROTECTIVE AS NEEDED



ALL DIMS IN

mm

Edmund Optics®

TITLE

25.4mm Dia. x 25.4mm EFL, 532nm DIELECTRIC
OFF-AXIS PARABOLIC MIRROR

DWG NO

15345

SHEET
1 OF 1