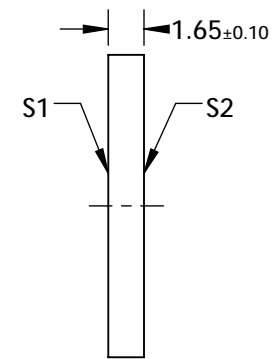
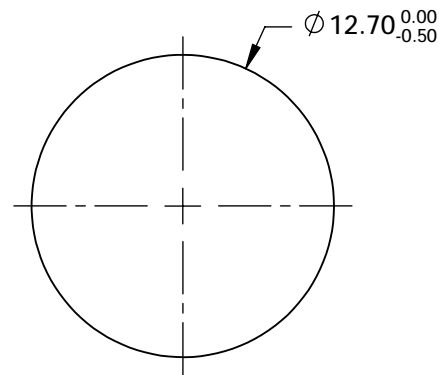
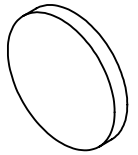


NOTES:

1. SUBSTRATE MATERIAL:  
FUSED SILICA
2. SURFACE S1 TO BE PARALLEL TO SURFACE S2 TO WITHIN <3 ARCMIN
3. COATING (APPLY ACROSS COATING APERTURE)  
S1: Square Aluminum (AlMgF2) Apertures  
R: 80±5% @ 250 - 2000nm @ 45° AOI  
T: 20±5% @ 250 - 2000nm @ 45° AOI  
S2: NONE
4. POLKA DOT CENTER TO CENTER SPACING : 0.15mm  
POLKA DOT MINIMUM APERTURE: 2mm
5. ROHS : COMPLIANT

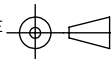


**FOR INFORMATION ONLY:  
DO NOT MANUFACTURE  
PARTS TO THIS DRAWING**

SPECIFICATIONS SUBJECT TO CHANGE WITHOUT NOTICE  
DIMENSIONS ARE FOR REFERENCE ONLY

	S1	S2
SHAPE	PLANO	PLANO
SURFACE QUALITY	80-50	80-50
CLEAR APERTURE	Ø 11.43	Ø 11.43
BEVEL	PROTECTIVE AS NEEDED	PROTECTIVE AS NEEDED

THIRD ANGLE  
PROJECTION



ALL DIMS IN

mm



**Edmund Optics®**

TITLE

12.7mm Dia 80R/20T, UV-NIR Polka-Dot  
Beamsplitter

DWG NO

18714

SHEET  
1 OF 1