

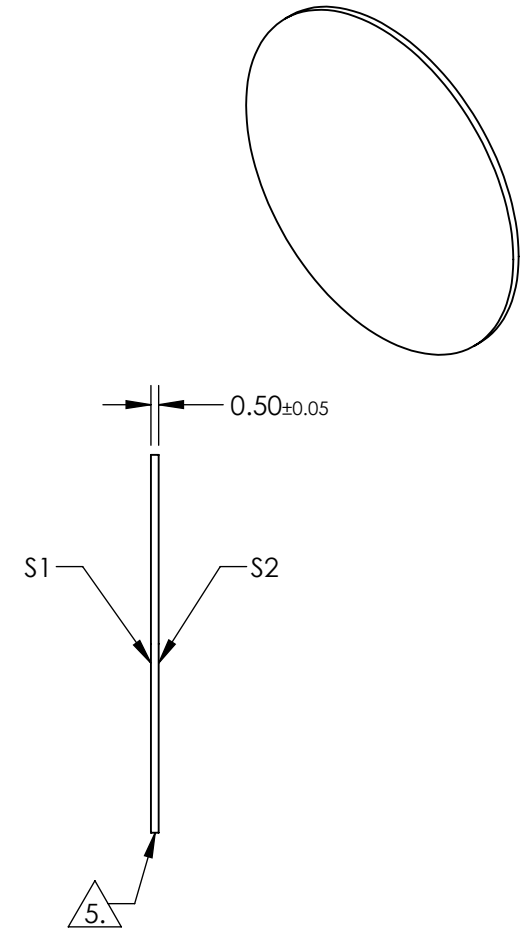
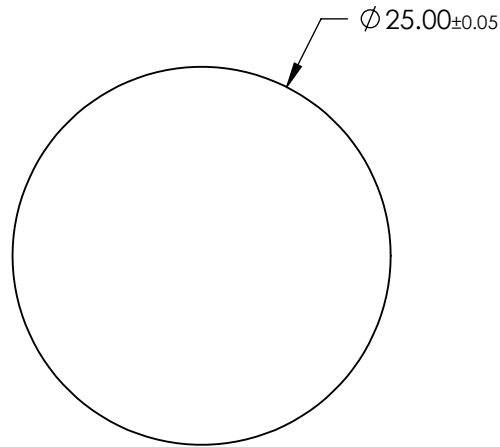
NOTES:

1. SUBSTRATE: SAPPHIRE (AL2O3)
2. SURFACE S1 TO BE PARALLEL WITH SURFACE S2 TO WITHIN  $\leq 3.5$  ARCMIN
3. ENVIRONMENTAL REQUIREMENTS:
  - S1 & S2: HIGH DURABILITY BBAR (400-1100nm)
  - ADHESION: PER MIL-M-13508C PARA 4.4.6
  - ABRASION: SEVERE PER MIL-C-675C PARA 4.5.10
  - HUMIDITY: PER MIL-C-675C PARA 4.5.8
  - SALT SOLUBILITY: PER MIL-C-675C PARA 4.5.7
  - SALT SPRAY: PER MIL-C-675C PARA 4.5.9
  - TEMPERATURE CYCLE: PER MIL-M-13508C PARA 4.4.4
4. REFLECTION PERFORMANCE ACROSS CLEAR APERTURE ON CENTER

S1 & S2:  
 R(AVG) <1.5% @ 400 - 1100nm  
 R(ABS) <2.0% @ 400 - 1100nm

 5. FINE GRIND SURFACE

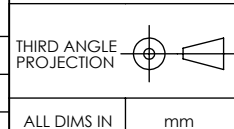
6. ROHS COMPLIANT



**FOR INFORMATION ONLY:  
 DO NOT MANUFACTURE  
 PARTS TO THIS DRAWING**

SPECIFICATIONS SUBJECT TO CHANGE WITHOUT NOTICE  
 DIMENSIONS ARE FOR REFERENCE ONLY

	S1	S2
SHAPE	PLANO	PLANO
SURFACE QUALITY	80-50	80-50
CLEAR APERTURE	$\phi$ 22.50	$\phi$ 22.50
SURFACE FLATNESS	2 $\lambda$ (typical)	2 $\lambda$ (typical)
BEVEL	PROTECTED AS NEEDED	PROTECTED AS NEEDED



 **Edmund Optics®**

TITLE	25mm Dia., 0.5mm Thick, 400-1100nm, High Durability AR Coated Sapphire Window	
DWG NO	18465	SHEET 1 OF 1