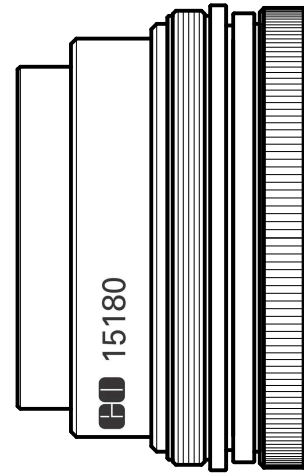


FT-150

F-theta lens for 1064nm

Features

- Optimized desing for diffraction limit in all the scanning areas
- Stable and high performance
- marking / cutting / engraving



Specifications

Focal length	152.2 mm	Mirror distance (recommend)	1st mirror-2nd mirror	18mm
			2nd mirror-housing	18mm
Designed wavelength	1064 nm	Mount screw	M85×1	
Scanning area	86.0×86.0 mm ²	scan angle	±22.62 degrees	
Max. input beam diameter	φ12.0 mm	Total transmission	T ≥ 95%	
1/e ² beam spot size	φ26.0 μm	Material	Optical glass	
Working distance	171.2 mm			

Outline

