

NOTES:

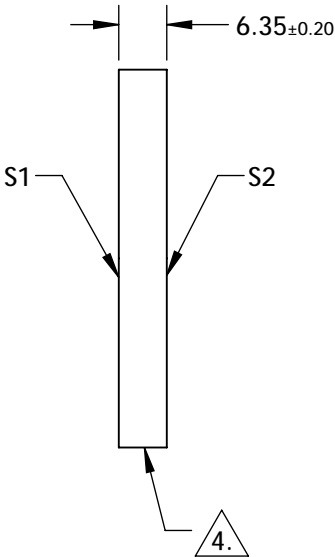
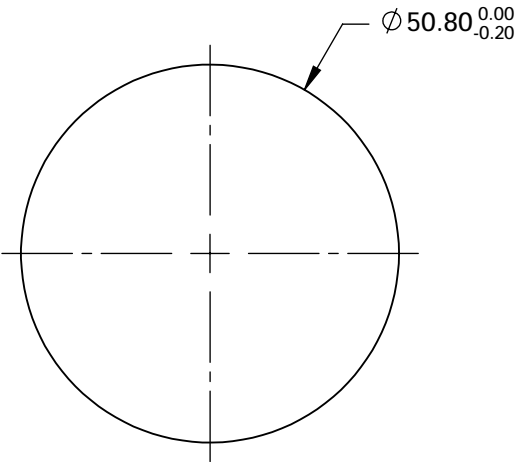
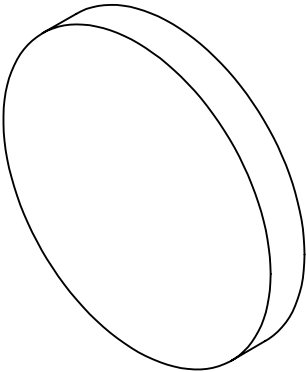
- 1. SUBSTRATE: Fused Silica
- 2. SURFACE S2 TO BE PARALLEL WITH SURFACE S1 TO WITHIN <3 ARCMIN
- 3. COATING (APPLY ACROSS CLEAR APERTURE)

S1: R(ABS) >99.5% @ 532 & 1064nm @ 45° AOI
DAMAGE THRESHOLD:
15 J/cm2 @ 20ns @ 532nm
20 J/cm2 @ 20ns @ 1064nm

S2: NONE

4. COMMERCIAL POLISHED

5. POWER, IRREGULARITY, AND SURFACE QUALITY SPECIFICATION APPLY
ACROSS CLEAR APERTURE



FOR INFORMATION ONLY:
DO NOT MANUFACTURE
PARTS TO THIS DRAWING

SPECIFICATIONS SUBJECT TO CHANGE WITHOUT NOTICE
DIMENSIONS ARE FOR REFERENCE ONLY

	S1	S2
SHAPE	PLANO	PLANO
SURFACE QUALITY	10-5	NA
CLEAR APERTURE	Ø 45	NA
BEVEL	PROTECTED AS NEEDED	PROTECTED AS NEEDED



ALL DIMS IN mm

Edmund Optics

TITLE

50.8mm Dia. x 6.35mm 532nm/1064nm, Dual
Band Laser Mirror

DWG NO

20612

SHEET
1 OF 1