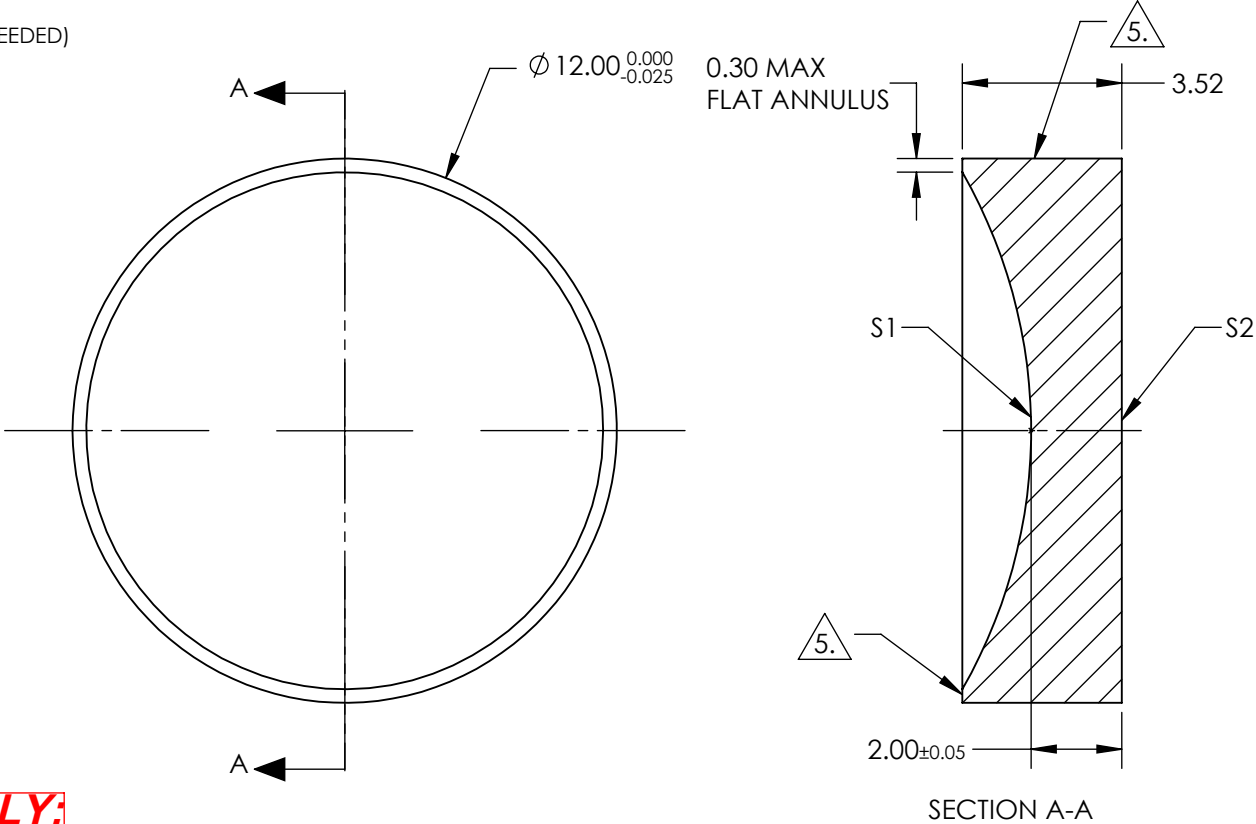


NOTES:

- 1. SUBSTRATE:
FUSED SILICA
- 2. ROHS COMPLIANT
- 3. COATING (APPLY ACROSS CLEAR APERTURE)

S1 & S2: 1064 V-COAT
R(ABS) <0.25% @ 1064nm


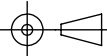
- 4. FINE GRIND SURFACE (ADD INK NOTE AS NEEDED)
- 5. FINE GRIND SURFACE
- 6. FOCAL LENGTH (EFL): -25.00 mm
BACK FOCAL LENGTH (BFL): -26.37 mm



FOR INFORMATION ONLY:
DO NOT MANUFACTURE
PARTS TO THIS DRAWING

SPECIFICATIONS SUBJECT TO CHANGE WITHOUT NOTICE
DIMENSIONS ARE FOR REFERENCE ONLY

	S1	S2
SHAPE	CONCAVE	PLANO
RADIUS	-11.46	INFINITY
SURFACE QUALITY	40-20	40-20
CLEAR APERTURE	Ø 11	Ø 11
BEVEL	PROTECTED AS NEEDED	PROTECTED AS NEEDED

 Edmund Optics®			
THIRD ANGLE PROJECTION 		TITLE	12.0mm Dia. x -25 FL, 1064 V-Coat , UV Plano-Concave Lens
ALL DIMS IN	mm	DWG NO	21032
			SHEET 1 OF 1