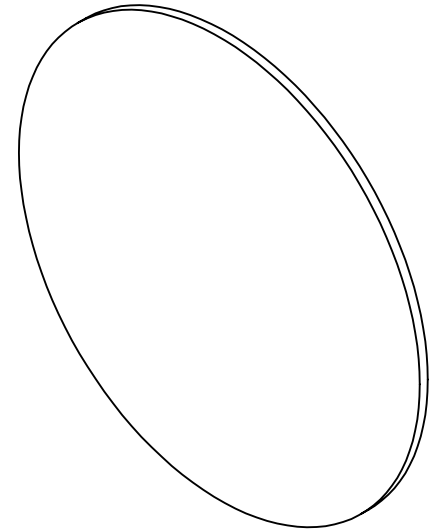
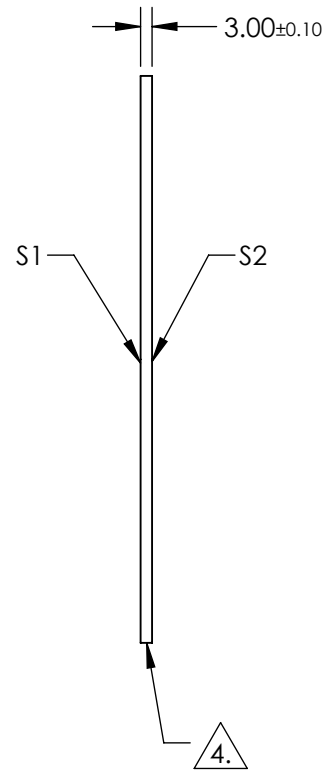
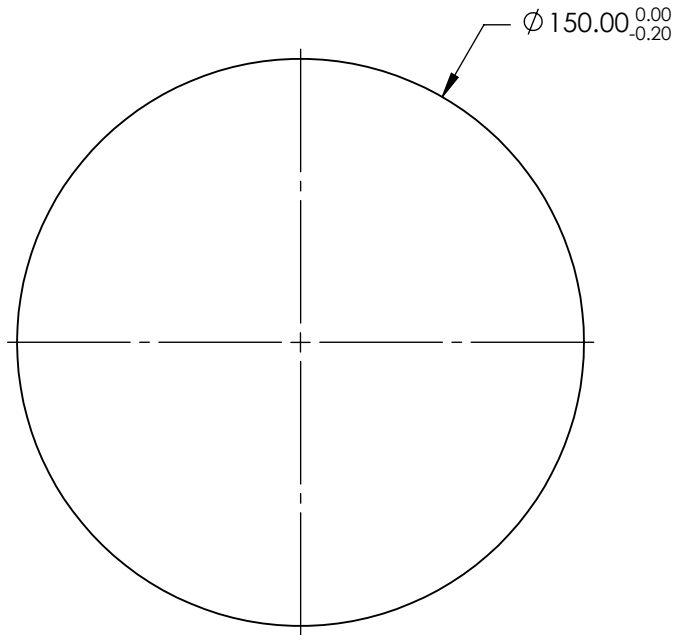


NOTES:

1. SUBSTRATE:
Fused Silica (Corning 7980)
2. S2 TO BE PARALLEL WITH S1 TO WITHIN <1' ARCMIN
3. COATING (APPLY ACROSS CLEAR APERTURE)
S1 & S2: R(ABS) ≤0.25% @ 880nm
R(AVG) ≤1.25% FROM 400 - 870nm
R(AVG) ≤1.25% FROM 890 - 1000nm
4. FINE GRIND SURFACE
5. RoHS COMPLIANT

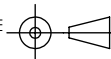


**FOR INFORMATION ONLY:
DO NOT MANUFACTURE
PARTS TO THIS DRAWING**

SPECIFICATIONS SUBJECT TO CHANGE WITHOUT NOTICE
DIMENSIONS ARE FOR REFERENCE ONLY

	S1	S2
SHAPE	PLANO	PLANO
SURFACE QUALITY	40-20	40-20
CLEAR APERTURE (mm)	Ø135.00	Ø135.00
BEVEL	PROTECTIVE AS NEEDED	PROTECTIVE AS NEEDED

THIRD ANGLE
PROJECTION



ALL DIMS IN

mm



Edmund Optics®

TITLE

150mm Dia., 3mm Thick, VIS-NIR Coated,
λ/4 Fused Silica Window

DWG NO

22063

SHEET
1 OF 1