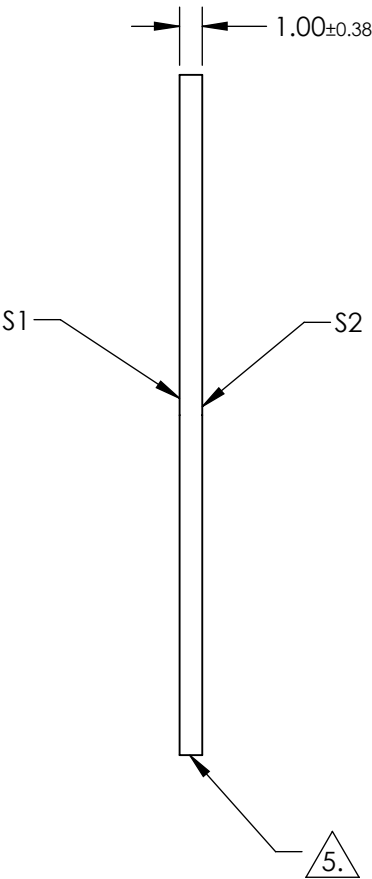
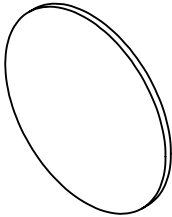
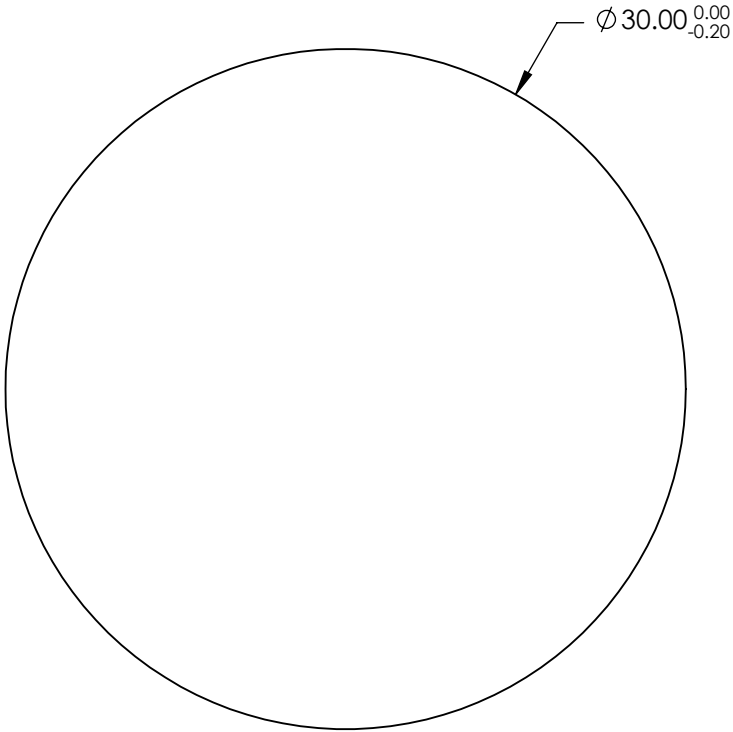


NOTES:

- 1. SUBSTRATE:  
FUSED SILICA
- 2. RoHS: COMPLIANT
- 3. SURFACE S2 TO BE PARALLEL TO SURFACE S1 TO WITHIN < 5 ARCMIN
- 4. COATING (APPLY ACROSS CLEAR APERTURE)

S1 & S2: NIR I (600-1050nm)  
Ravg ≤0.5% @ 600 - 1050nm


5. FINE GRIND SURFACE



**FOR INFORMATION ONLY:  
DO NOT MANUFACTURE  
PARTS TO THIS DRAWING**

SPECIFICATIONS SUBJECT TO CHANGE WITHOUT NOTICE  
DIMENSIONS ARE FOR REFERENCE ONLY

	S1	S2
SHAPE	PLANO	PLANO
SURFACE ACCURACY	1λ	1λ
SURFACE QUALITY	60-40	60-40
CLEAR APERTURE	Ø 27	Ø 27
BEVEL	PROTECTED AS NEEDED	PROTECTED AS NEEDED

**Edmund Optics®**

THIRD ANGLE PROJECTION	TITLE	30mm Dia. 1mm Thick NIR I, 1λ Fused Silica Window	
ALL DIMS IN	DWG NO	23327	SHEET 27 OF 35
mm			