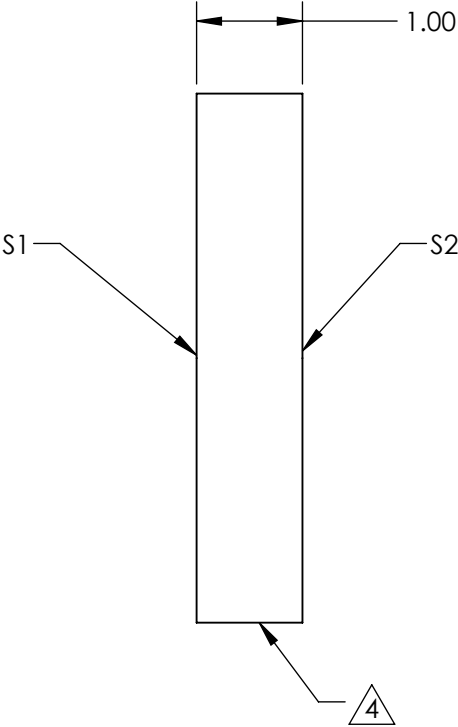
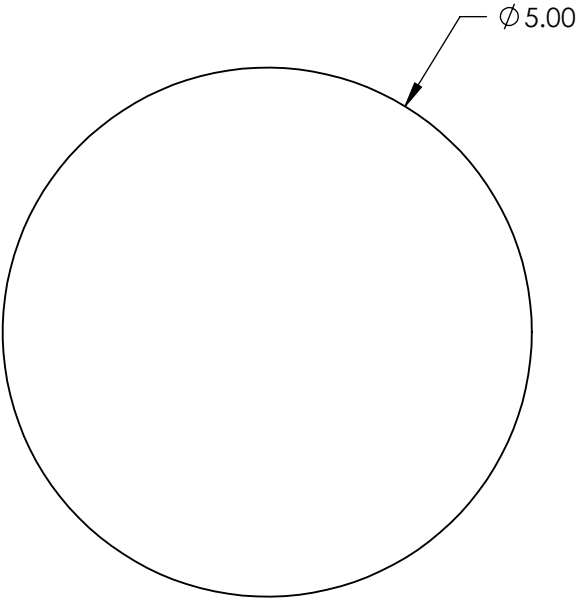


- NOTES:
- 1. SUBSTRATE: N-BK7
 - 2. S2 TO BE PARALLEL WITH S1 TO <1 ARCMIN
 - 3. COATING (APPLY ACROSS CLEAR APERTURE)

S1: VIS 0° (425-675nm)
S2: VIS 0° (425-675nm)
Ravg ≤0.4% @ 425 - 675nm

4. FINE GRIND SURFACE

5. ROHS COMPLIANT



FOR INFORMATION ONLY:
DO NOT MANUFACTURE
PARTS TO THIS DRAWING

SPECIFICATIONS SUBJECT TO CHANGE WITHOUT NOTICE
DIMENSIONS ARE FOR REFERENCE ONLY

	S1	S2
SHAPE	PLANO	PLANO
SURFACE QUALITY	60-40	60-40
CLEAR APERTURE	$\varnothing 4.50$	$\varnothing 4.50$
BEVEL	PROTECTED AS NEEDED	PROTECTED AS NEEDED



ALL DIMS IN mm

Edmund Optics®

TITLE

5mm Dia., 1mm Thick, VIS 0° Coated $\lambda/4$
N-BK7 Window

DWG NO

23377

SHEET
15 OF 84