

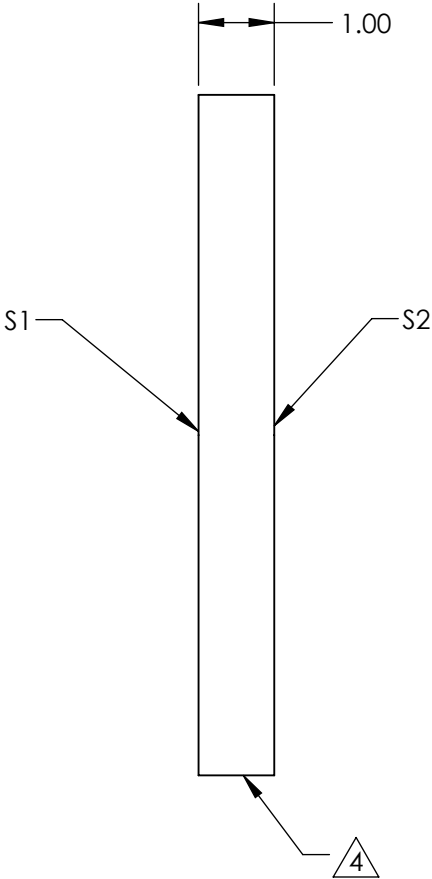
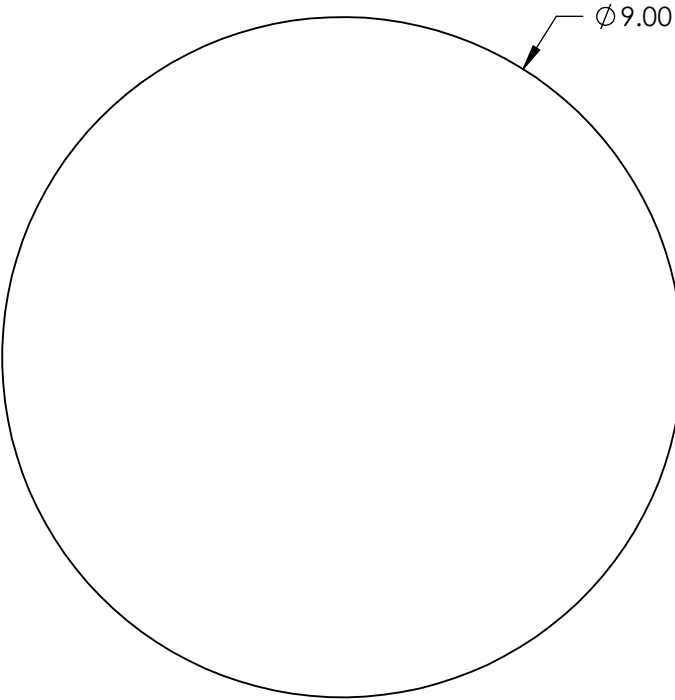
NOTES:

- 1. SUBSTRATE: N-BK7
- 2. S2 TO BE PARALLEL WITH S1 TO <1 ARCMIN
- 3. COATING (APPLY ACROSS CLEAR APERTURE)

S1: YAG-BBAR (500-1100nm)
S2: YAG-BBAR (500-1100nm)
Rabs <0.25% @ 532nm Rabs <0.25% @ 1064nm Ravg <1.0% @ 500 - 1100nm

4. FINE GRIND SURFACE

- 5. ROHS COMPLIANT
- 6. TRANSMITTED WAVEFRONT (P-V):
 $\lambda/4$ (per inch over clear aperture)



FOR INFORMATION ONLY:
DO NOT MANUFACTURE
PARTS TO THIS DRAWING

SPECIFICATIONS SUBJECT TO CHANGE WITHOUT NOTICE
DIMENSIONS ARE FOR REFERENCE ONLY

	S1	S2
SHAPE	PLANO	PLANO
SURFACE QUALITY	60-40	60-40
CLEAR APERTURE	Ø8.10	Ø8.10
BEVEL	PROTECTED AS NEEDED	PROTECTED AS NEEDED



ALL DIMS IN mm

Edmund Optics®

TITLE

9mm Dia., 1mm Thick, YAG-BBAR Coated
 $\lambda/4$ N-BK7 Window

DWG NO

23466

SHEET
72 OF 84