

NOTES:

1. SUBSTRATE: VACUUM UV GRADE CaF2

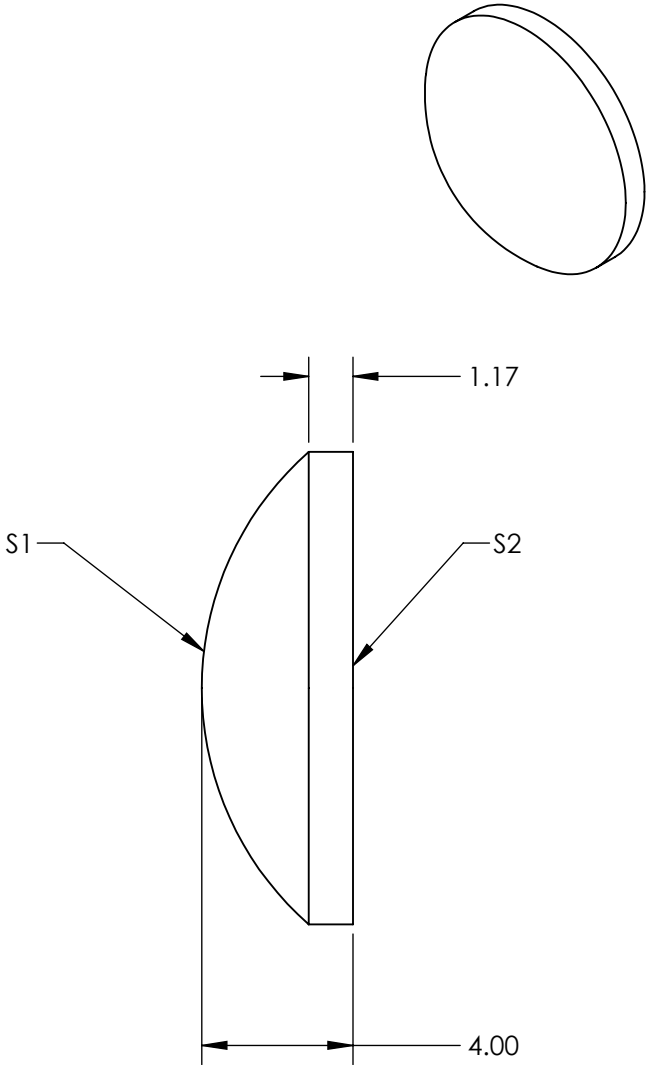
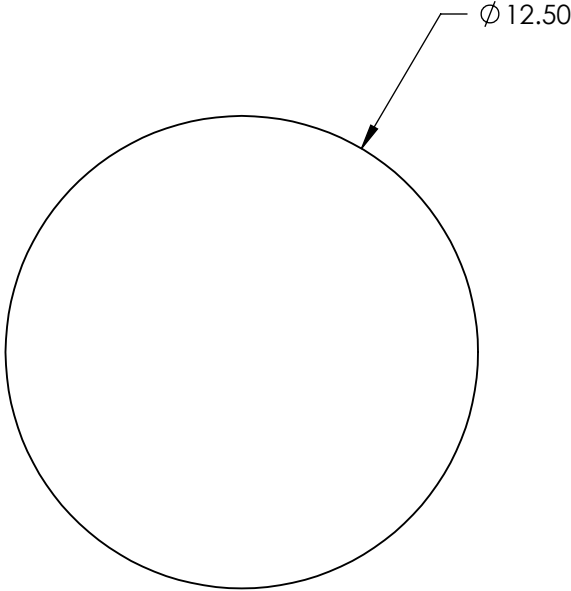
2. COATING

S1: VIS-NIR (400-1000nm)

S2: VIS-NIR (400-1000nm)

3. CENTERING: 2.86 arcmin


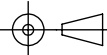
4. RoHS: COMPLIANT



**FOR INFORMATION ONLY:
DO NOT MANUFACTURE
PARTS TO THIS DRAWING**

SPECIFICATIONS SUBJECT TO CHANGE WITHOUT NOTICE
DIMENSIONS ARE FOR REFERENCE ONLY

	S1	S2
SHAPE	CONVEX	PLANO
RADIUS	8.32	INFINITY
SURFACE QUALITY	40-20	40-20
CLEAR APERTURE	$\varnothing 11.5$	$\varnothing 11.5$
BEVEL	PROTECTED AS NEEDED	PROTECTED AS NEEDED

 Edmund Optics®			
THIRD ANGLE PROJECTION 		TITLE	LENS PCX CAF2 12.5 X 18 VIS-NIR CTD
ALL DIMS IN	mm	DWG NO	22515
			SHEET 1 OF 20