

NOTES:

- 1. SUBSTRATE:
FUSED SILICA
- 2. SURFACE S2 TO BE PARALLEL TO S1 TO WITHIN <3 ARCMIN
- 3. COATING (APPLY ACROSS CLEAR APERTURE)

Surface 1: Rabs: >99% @ 355nm, Tabs: >95% @ 532nm
Surface 2: Rabs: <0.5% @ 532nm

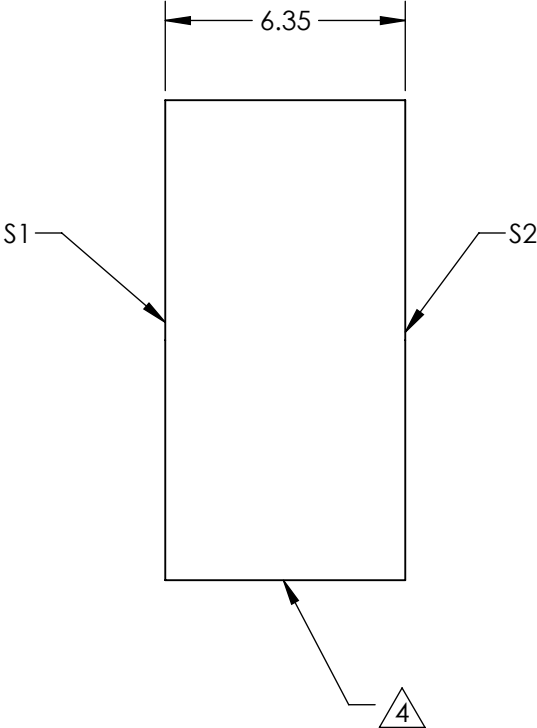
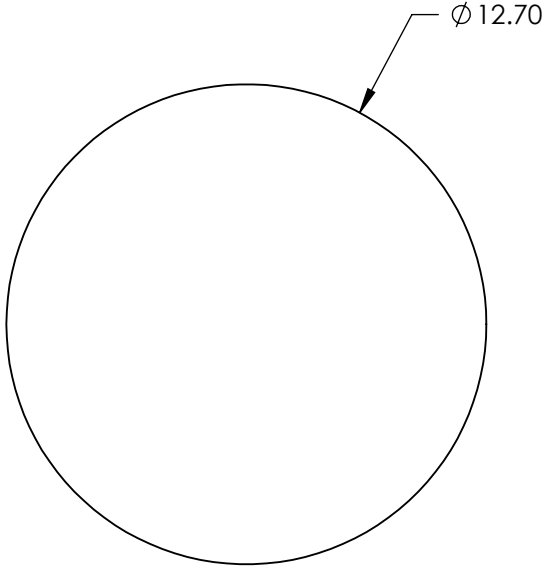
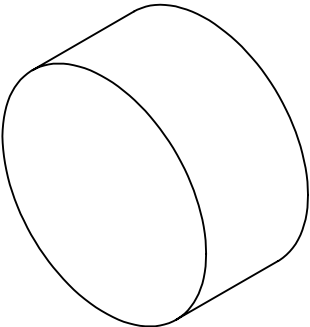
DAMAGE THRESHOLD, PULSED

Surface 1: 2.5 J/cm2 @ 355nm, 20ns, 20Hz 5 J/cm2 @ 532nm, 20ns, 20Hz
Surface 2: 10 J/cm2 @ 532nm, 20ns, 20Hz

4. FINE GRIND SURFACE

5. FOCAL LENGTH TOLERANCE:

6. ROHS COMPLIANT

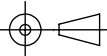


**FOR INFORMATION ONLY:
DO NOT MANUFACTURE
PARTS TO THIS DRAWING**

SPECIFICATIONS SUBJECT TO CHANGE WITHOUT NOTICE
DIMENSIONS ARE FOR REFERENCE ONLY

	S1	S2
SHAPE	PLANO	PLANO
SURFACE QUALITY	10-5	10-5
CLEAR APERTURE	>85 %	>85 %
COATING APERTURE	>85 %	>85 %
BEVEL	PROTECTED AS NEEDED	PROTECTED AS NEEDED

THIRD ANGLE
PROJECTION



ALL DIMS IN

mm



Edmund Optics®

TITLE

12.7mm DIA., 532nm T, 355nm R 0DEG
Harmonic Separator

DWG NO

22662

SHEET
3 OF 8