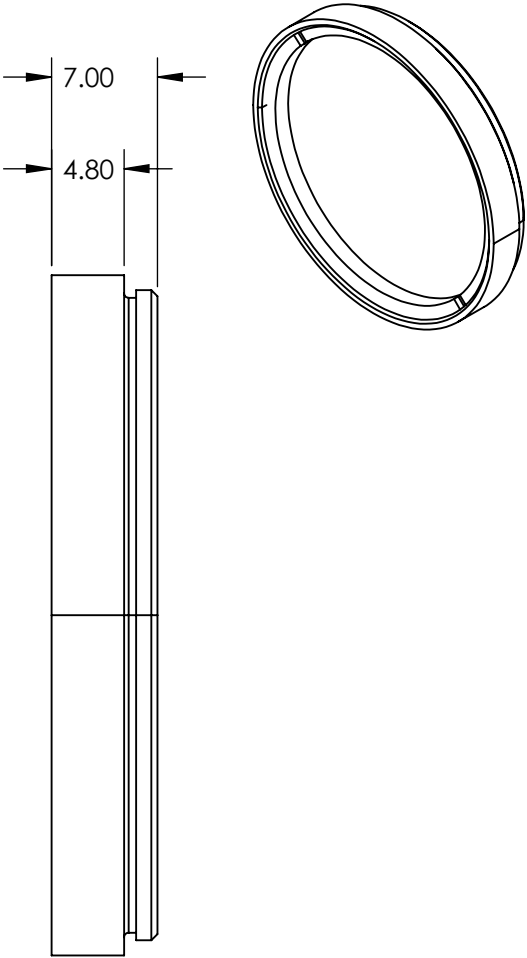
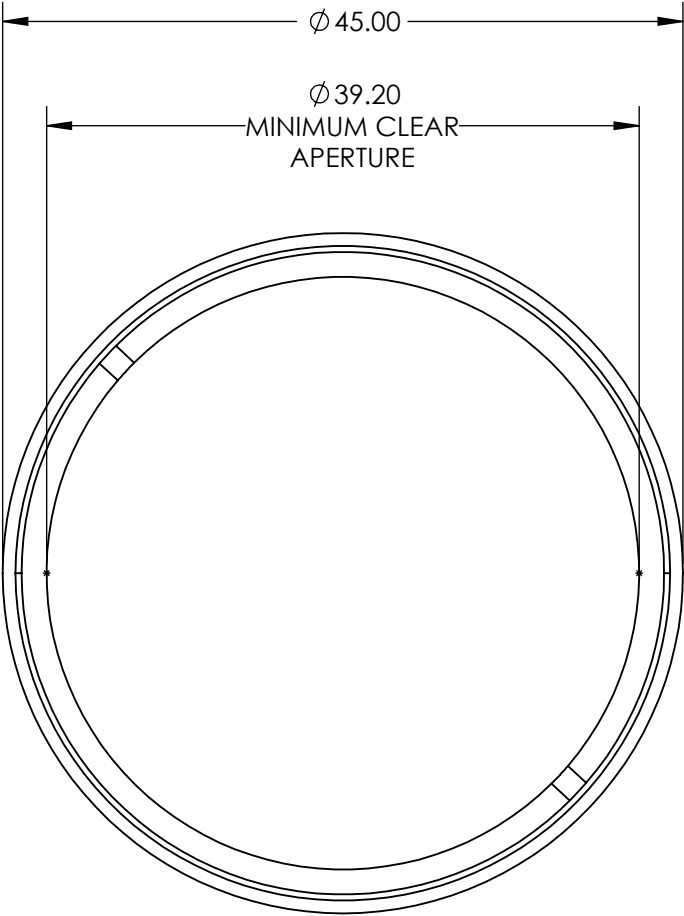


NOTES:

- 1. SUBSTRATE:
SAPPHIRE (Al2O3)
- 2. SURFACE S2 TO BE PARALLEL WITH SURFACE S1 TO
WITHIN 3.5 ARCMIN
- 3. COATING (APPLY ACROSS CLEAR APERTURE)
S1 & S2: NONE
- 4. FINE GRIND SURFACE (ADD INK NOTE AS NEEDED)
- 5. POWER, IRREGULARITY, AND SURFACE QUALITY
SPECIFICATIONS APPLY ACROSS CLEAR APERTURE
- 6. ROHS COMPLIANT



**FOR INFORMATION ONLY:
DO NOT MANUFACTURE
PARTS TO THIS DRAWING**

SPECIFICATIONS SUBJECT TO CHANGE WITHOUT NOTICE
DIMENSIONS ARE FOR REFERENCE ONLY

	S1	S2
SHAPE	PLANO	PLANO
CLEAR APERTURE	Ø 36.2	Ø 36.2
SURFACE FLATNESS	2λ	2λ
SURFACE ROUGHNESS	0.1 MICRONS PER INCH	0.1 MICRONS PER INCH
SURFACE QUALITY	80-50	80-50
BIREFRINGENCE (no-ne)	0.008	0.008
BEVEL	PROTECTED AS NEEDED	PROTECTED AS NEEDED



ALL DIMS IN mm

Edmund Optics®

**Machine Vision Mounted 40.2mm Dia., 1.5mm
Thick, Uncoated, Sapphire Window**

DWG NO 23286

SHEET
1 OF 1