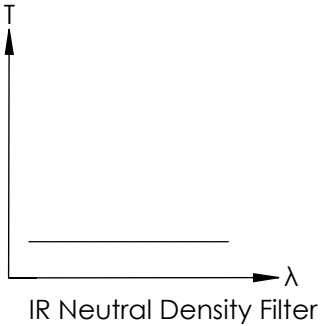
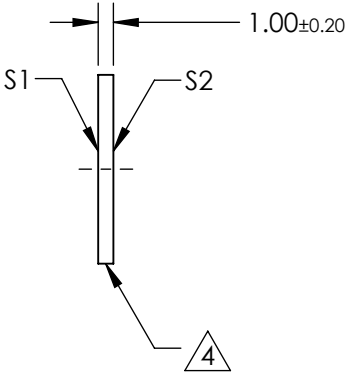
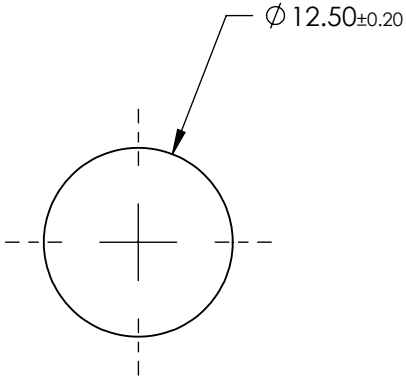


NOTES:

- 1. SUBSTRATE: Germanium (Ge)
- 2. SURFACE S2 TO BE PARALLEL WITH SURFACE S1 TO <10 ARCMIN
- 3. COATING (APPLY ACROSS CLEAR APERTURE)  
OPTICAL DENSITY = 0.9 @ 2 - 14  $\mu$ m  
TRANSMISSION = 12.6 @ 2 - 14  $\mu$ m
- 4. FINE GRIND SURFACE
- 5. POWER, IRREGULARITY, AND SURFACE QUALITY SPECIFICATIONS  
APPLY ACROSS CLEAR APERTURE
- 6. ROHS COMPLIANT

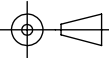
**FOR INFORMATION ONLY:  
DO NOT MANUFACTURE  
PARTS TO THIS DRAWING**



SPECIFICATIONS SUBJECT TO CHANGE WITHOUT NOTICE  
DIMENSIONS ARE FOR REFERENCE ONLY

	S1	S2
SHAPE	PLANO	PLANO
SURFACE FLATNESS	3 - 5 $\lambda$	3 - 5 $\lambda$
SURFACE QUALITY	80-50	80-50
CLEAR APERTURE	$\phi$ 11.25	$\phi$ 11.25
BEVEL	PROTECTED AS NEEDED	PROTECTED AS NEEDED

THIRD ANGLE  
PROJECTION



ALL DIMS IN

mm



**Edmund Optics®**

TITLE

0.9 OD, 12.5mm Dia., IR Neutral Density Filter

DWG NO

12008

SHEET  
9 OF 37