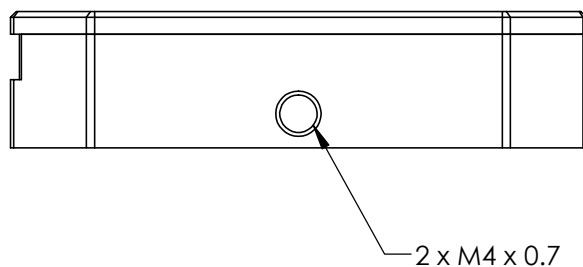
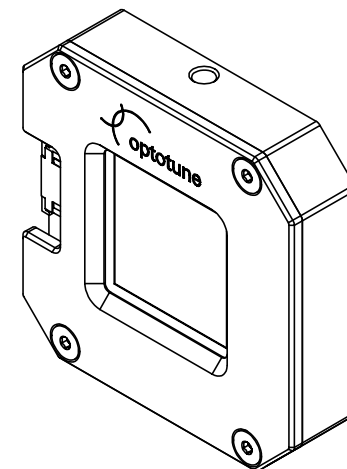
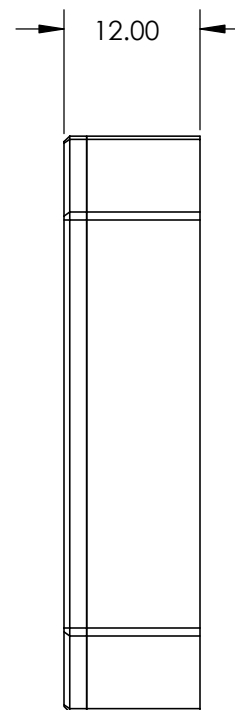
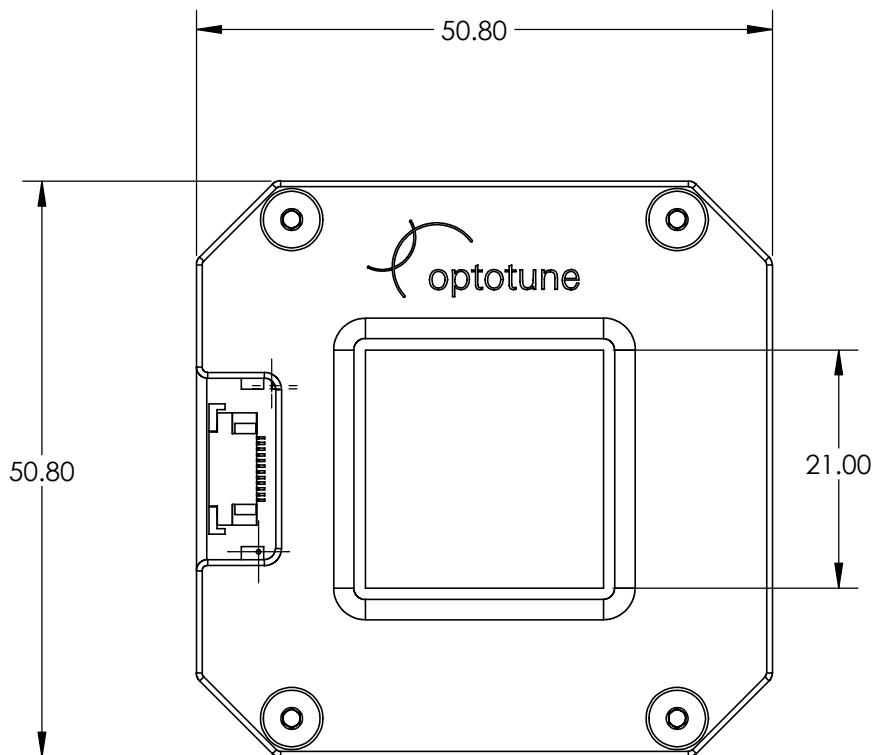


NOTES:

1. COATING (APPLY ACROSS CLEAR APERTURE)  
VISIBLE BROADBAND COATING  
T(AVG) >98% @ 400 - 680nm



SPECIFICATIONS SUBJECT TO CHANGE WITHOUT NOTICE  
DIMENSIONS ARE FOR REFERENCE ONLY

**FOR INFORMATION ONLY:  
DO NOT MANUFACTURE  
PARTS TO THIS DRAWING**

**EO<sup>®</sup> Edmund Optics<sup>®</sup>**

|                        |    |        |   |              |
|------------------------|----|--------|---|--------------|
| THIRD ANGLE PROJECTION |    | TITLE  | 20mm Clear Aperture Optotune Beam Shifter |              |
| ALL DIMS IN            | mm | DWG NO | 23851                                     | SHEET 1 OF 1 |