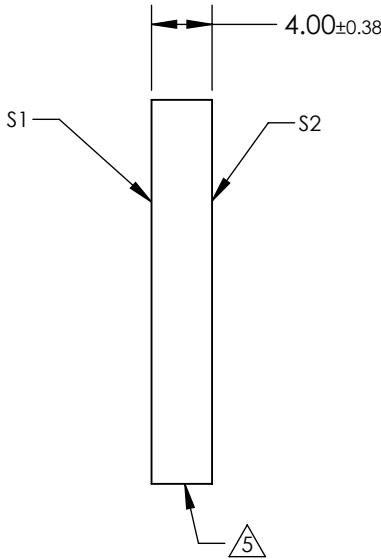
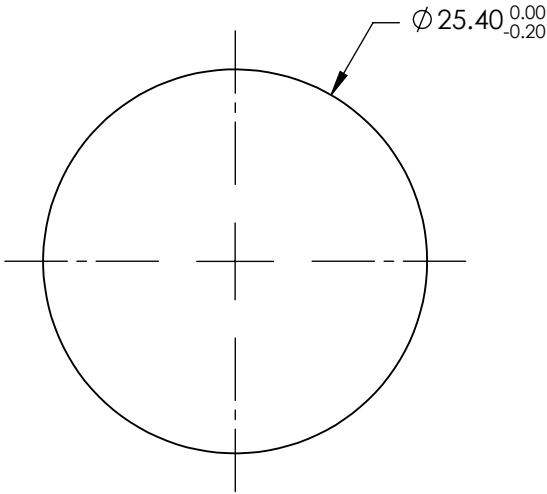


- NOTES:
- 1. SUBSTRATE: Fused Silica (Corning 7980)
 - 2. RoHS COMPLIANT
 - 3. SURFACE S2 TO BE PARALLEL WITH SURFACE S 1 TO WITHIN ACRMINS
 - 4. Coating (Apply Across Clear Aperture):
 - S1 & S2: Rabs ≤1.5% @ 750 - 800nm
 - Rabs ≤1.0% @ 800 - 1550nm
 - Ravg ≤0.7% @ 750 - 1550nm

5. FINE GROUND SURFACE



**FOR INFORMATION ONLY:
DO NOT MANUFACTURE
PARTS TO THIS DRAWING**

SPECIFICATIONS SUBJECT TO CHANGE WITHOUT NOTICE
DIMENSIONS ARE FOR REFERENCE ONLY

	S1	S2
Shape	Plano	Plano
Surface Accuracy	1λ	1λ
Surface Quality	60-40	60-40
Clear Aperture	22.86	22.86
Bevel	Protected as Needed	Protected as Needed

THIRD ANGLE
PROJECTION

ALL DIMS IN mm

 **Edmund Optics®**

TITLE	25.4mm Dia. 4mm Thick NIR II Coated, 1λ Fused Silica Window	
DWG NO	25300	SHEET 57 OF 101