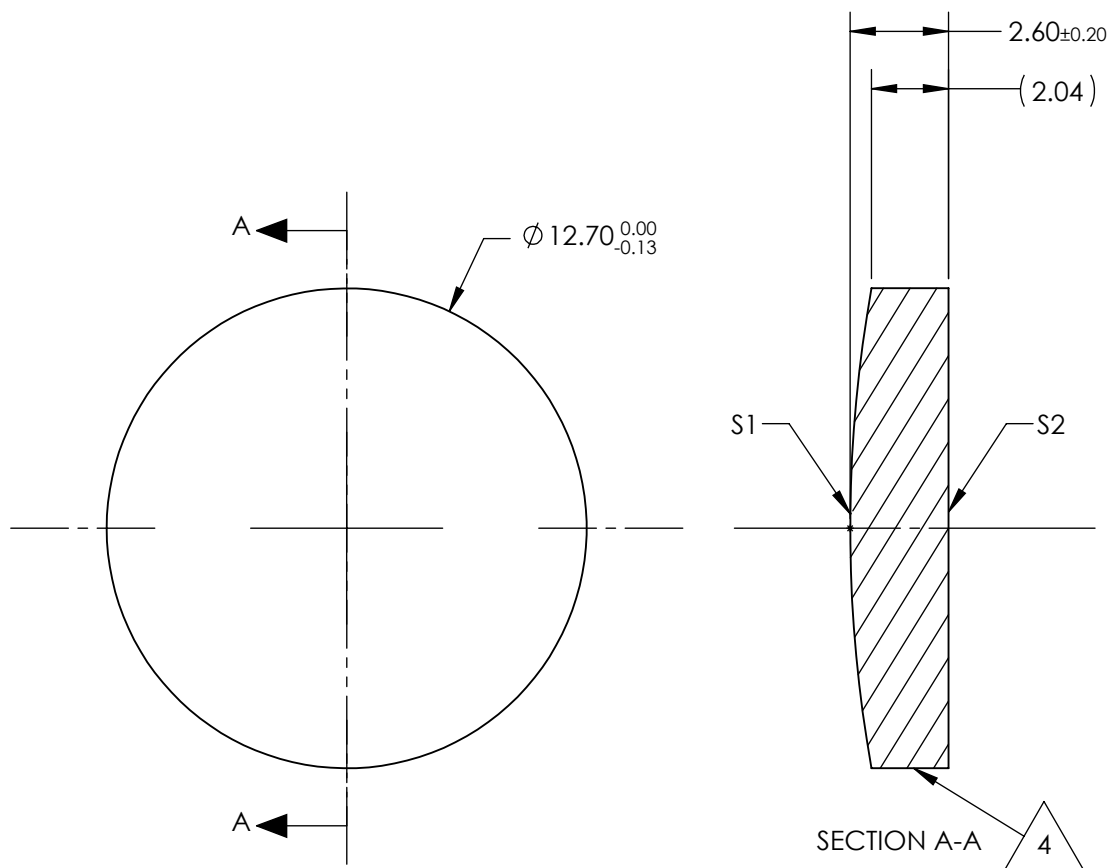


NOTES:

1. SUBSTRATE:
Zinc Selenide (ZnSe), CVD Grade
2. CENTERING TOLERANCE:
<3 ARCMIN
3. COATING (APPLY ACROSS CLEAR APERTURE)
S1 & S2: NONE
4. FINE GRIND SURFACE
5. FOCAL LENGTH TOLERANCE: $\pm 2\%$
6. ROHS COMPLIANT



**FOR INFORMATION ONLY:
DO NOT MANUFACTURE
PARTS TO THIS DRAWING**

SPECIFICATIONS SUBJECT TO CHANGE WITHOUT NOTICE
DIMENSIONS ARE FOR REFERENCE ONLY

	S1	S2	EFL @ 10.6 μ m	25.4	 Edmund Optics®		
SHAPE	CONVEX	PLANO	BFL @ 10.6 μ m	24.56			
RADIUS	35.97	INFINITY			TITLE	12.7mm Dia. x 25.4mm FL, Uncoated, ISP Optics ZnSe Plano-Convex Lens	
IRREGULARITY AT 10.6 μ m	$\lambda/20$	$\lambda/20$					
SURFACE QUALITY	60-40	60-40			DWG NO	24940	
CLEAR APERTURE	$\varnothing 11.43$	$\varnothing 11.43$					
BEVEL	PROTECTED AS NEEDED	PROTECTED AS NEEDED	ALL DIMS IN	mm			SHEET 1 OF 1