
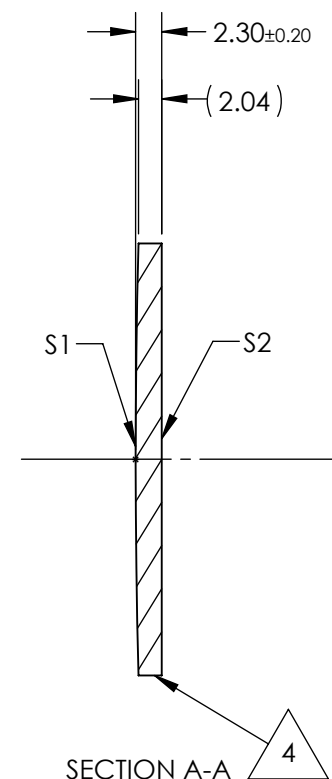
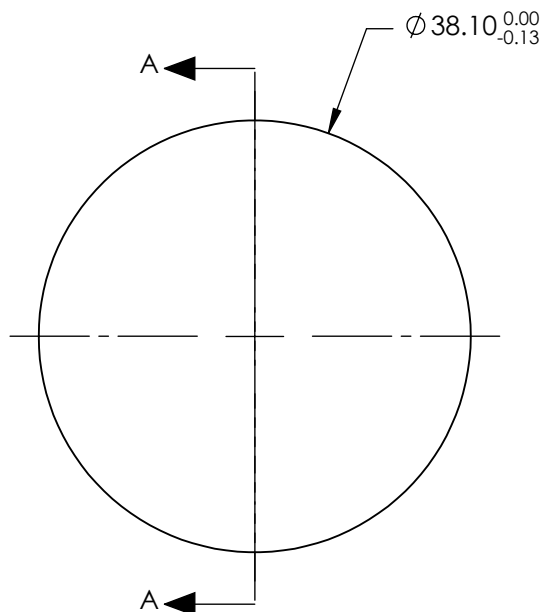


NOTES:

1. SUBSTRATE:
Zinc Selenide (ZnSe), CVD Grade
2. CENTERING TOLERANCE:
<3 ARCMIN
3. COATING (APPLY ACROSS CLEAR APERTURE)
S1 & S2: NONE
4.  FINE GRIND SURFACE
5. FOCAL LENGTH TOLERANCE: $\pm 2\%$
6. ROHS COMPLIANT



**FOR INFORMATION ONLY:
DO NOT MANUFACTURE
PARTS TO THIS DRAWING**

SPECIFICATIONS SUBJECT TO CHANGE WITHOUT NOTICE
DIMENSIONS ARE FOR REFERENCE ONLY

	S1	S2	EFL @ 10.6 μ m	500.0	 Edmund Optics®		
SHAPE	CONVEX	PLANO	BFL @ 10.6 μ m	496.79			
RADIUS	698.2	INFINITY			TITLE	38.1mm Dia. x 500mm FL, Uncoated, ISP Optics ZnSe Plano-Convex Lens	
IRREGULARITY AT 10.6 μ m	$\lambda/20$	$\lambda/20$					
SURFACE QUALITY	60-40	60-40	ALL DIMS IN		DWG NO	24958	
CLEAR APERTURE	$\varnothing 34.29$	$\varnothing 34.29$					
BEVEL	PROTECTED AS NEEDED	PROTECTED AS NEEDED	mm				SHEET 1 OF 1