
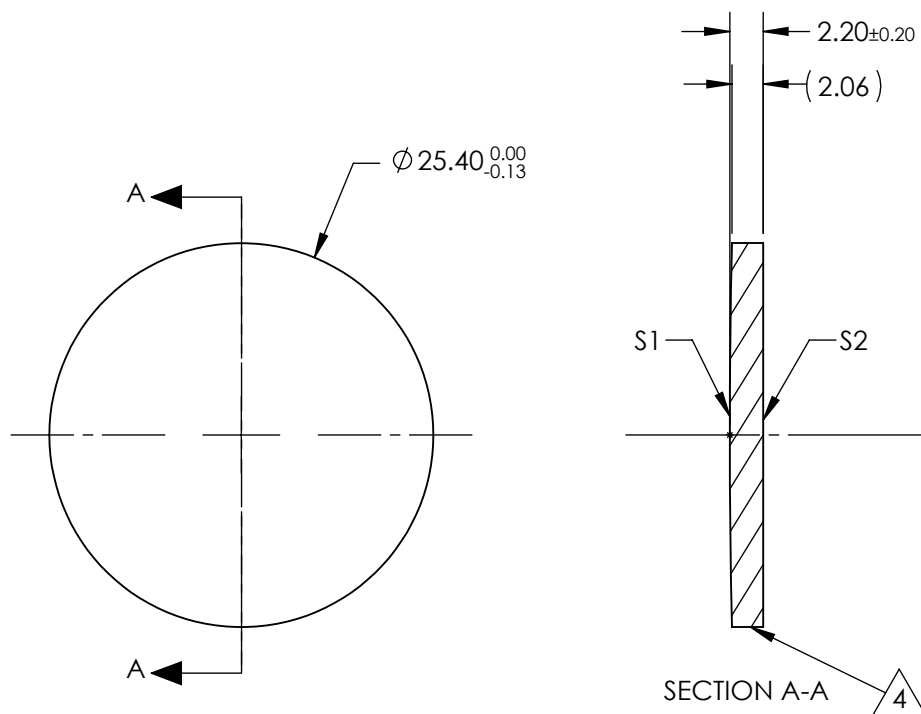



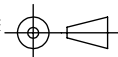
NOTES:

1. SUBSTRATE:
Germanium (Ge)
2. CENTERING TOLERANCE:
<3 ARCMIN
3. COATING (APPLY ACROSS CLEAR APERTURE)
S1 & S2: NONE
4.  FINE GRIND SURFACE
5. FOCAL LENGTH TOLERANCE: $\pm 2\%$
6. ROHS COMPLIANT



**FOR INFORMATION ONLY:
DO NOT MANUFACTURE
PARTS TO THIS DRAWING**

SPECIFICATIONS SUBJECT TO CHANGE WITHOUT NOTICE
DIMENSIONS ARE FOR REFERENCE ONLY

	S1	S2	EFL @ 10.6 μ m	200.0	 Edmund Optics®		
SHAPE	CONVEX	PLANO	BFL @ 10.6 μ m	198.25			
RADIUS	597.16	INFINITY			TITLE	25.4mm Dia. x 200mm FL, Uncoated, ISP Optics Germanium (Ge) PCX Lens	
IRREGULARITY AT 10.6 μ m	$\lambda/20$	$\lambda/20$					
SURFACE QUALITY	60-40	60-40	ALL DIMS IN		DWG NO	24850	
CLEAR APERTURE	$\varnothing 22.86$	$\varnothing 22.86$					
BEVEL	PROTECTED AS NEEDED	PROTECTED AS NEEDED	mm				SHEET 1 OF 1