

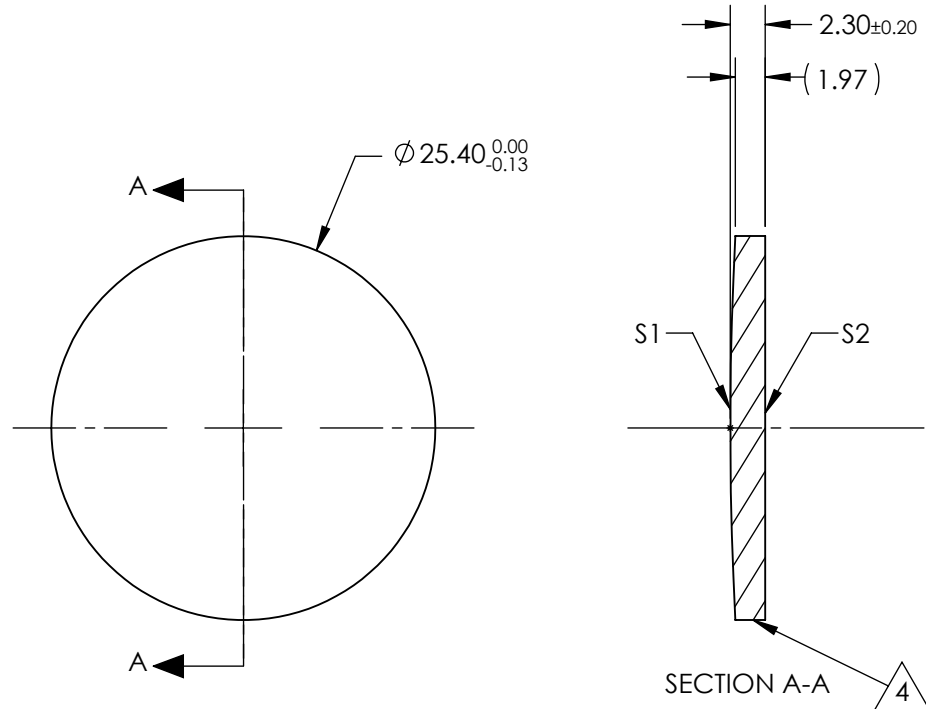
NOTES:

1. SUBSTRATE:
Silicon (Si)
2. CENTERING TOLERANCE:
<3 ARCMIN
3. COATING (APPLY ACROSS CLEAR APERTURE)
S1 & S2: R(AVG) <0.5% @ 3 - 5µm
R(ABS) <1.5% @ 3 - 5µm

4. FINE GRIND SURFACE

5. FOCAL LENGTH TOLERANCE: ±2%

6. ROHS COMPLIANT



**FOR INFORMATION ONLY:
DO NOT MANUFACTURE
PARTS TO THIS DRAWING**

SPECIFICATIONS SUBJECT TO CHANGE WITHOUT NOTICE
DIMENSIONS ARE FOR REFERENCE ONLY

	S1	S2	EFL @ 4µm	100.0	 Edmund Optics®		
SHAPE	CONVEX	PLANO	BFL @ 4µm	99.28			
RADIUS	242.42	INFINITY			TITLE	25.4mm Dia. x 100mm FL, 3-5µm BBAR Coated, ISP Optics Silicon (Si) PCX Lens	
IRREGULARITY AT 632.8nm	1λ	1λ					
SURFACE QUALITY	80-50	80-50	ALL DIMS IN		DWG NO	24894	
CLEAR APERTURE	ø22.86	ø22.86					
BEVEL	PROTECTED AS NEEDED	PROTECTED AS NEEDED	mm				SHEET 1 OF 1