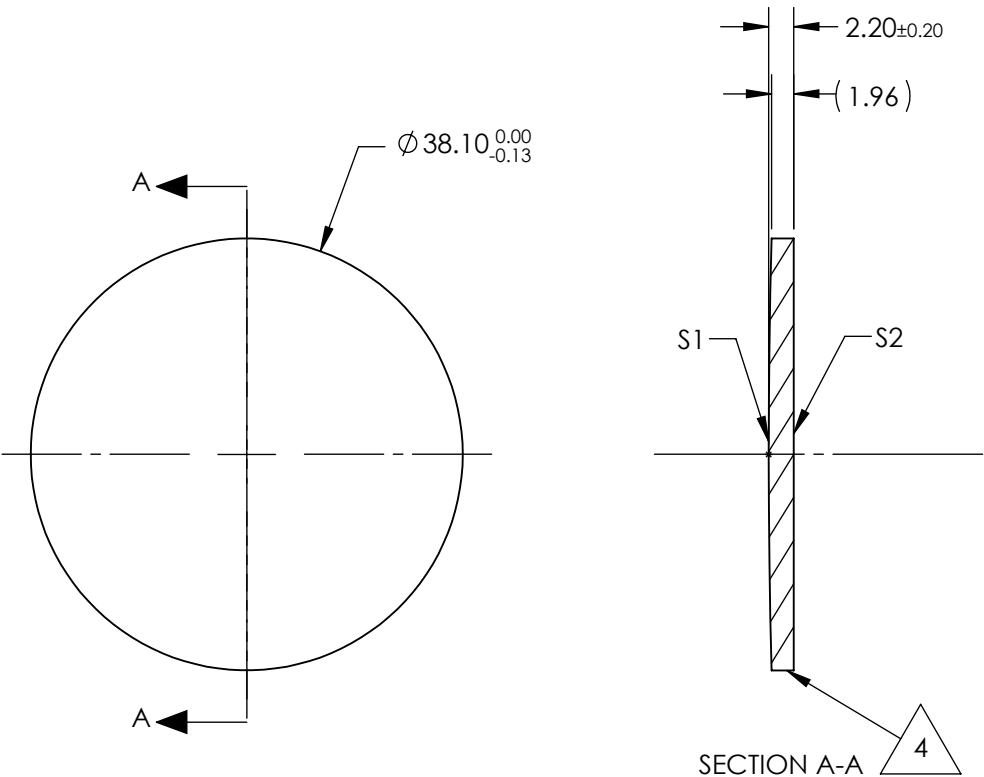


NOTES:

- 1. SUBSTRATE:  
Germanium (Ge)
- 2. CENTERING TOLERANCE:  
<3 ARCMIN
- 3. COATING (APPLY ACROSS CLEAR APERTURE)  
S1 & S2: NONE
- 4. FINE GRIND SURFACE
- 5. FOCAL LENGTH TOLERANCE: ±2%
- 6. ROHS COMPLIANT



**FOR INFORMATION ONLY:  
DO NOT MANUFACTURE  
PARTS TO THIS DRAWING**

SPECIFICATIONS SUBJECT TO CHANGE WITHOUT NOTICE  
DIMENSIONS ARE FOR REFERENCE ONLY

			EFL @ 10.6μm	254.0	DIMENSIONS ARE FOR REFERENCE ONLY			
SHAPE	S1 CONVEX	S2 PLANO	BFL @ 10.6μm	248.53	 Edmund Optics®			
RADIUS	748.2	INFINITY						
IRREGULARITY AT 10.6μm	λ/20	λ/20			TITLE	38.1mm Dia. x 254mm FL, Uncoated, ISP Optics Germanium (Ge) PCX Lens		
SURFACE QUALITY	60-40	60-40						
CLEAR APERTURE	ø34.29	ø34.29			DWG NO	24858		
BEVEL	PROTECTED AS NEEDED	PROTECTED AS NEEDED	ALL DIMS IN	mm				
						SHEET 1 OF 1		