

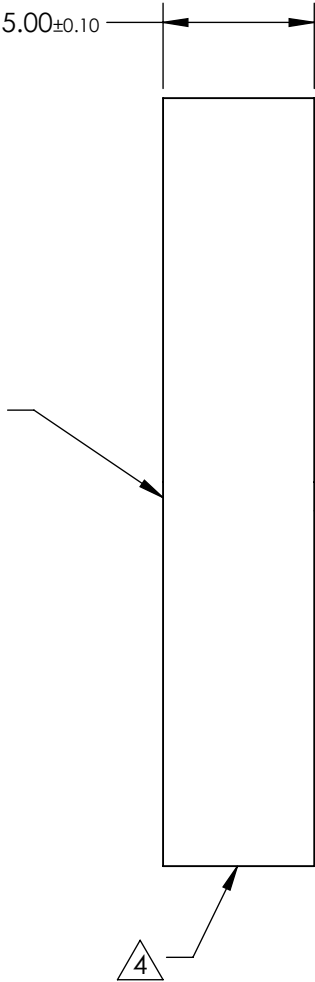
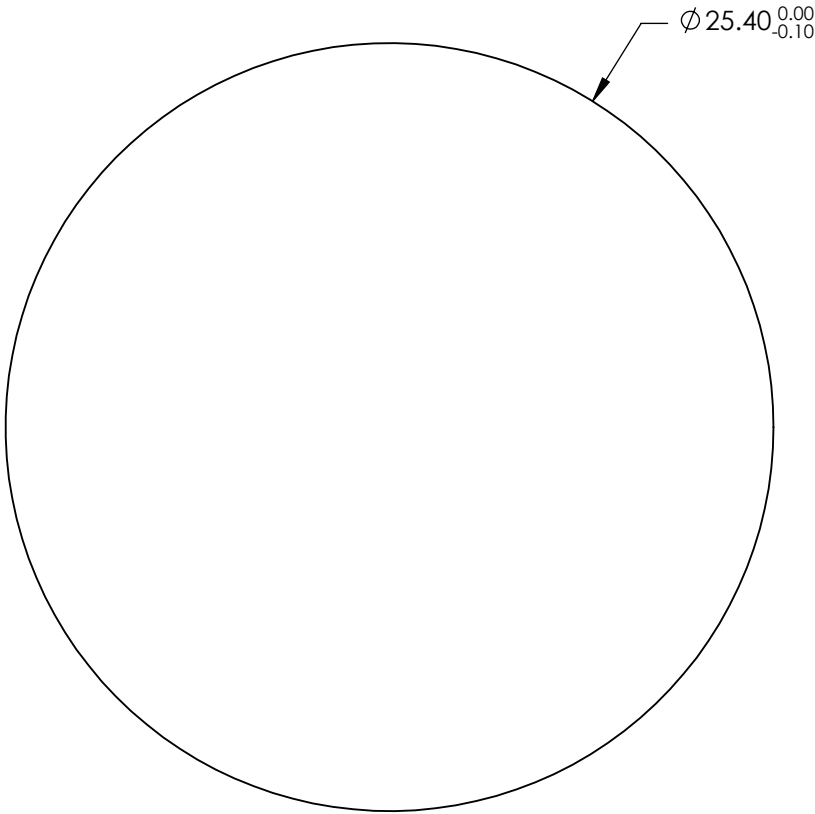
NOTES:

- 1. SUBSTRATE:
ZINC SELENIDE
- 2. SURFACE S2 TO BE PARALLEL WITH S1 TO <1 arcmin
- 3. COATING (APPLY ACROSS CLEAR APERTURE)

S1&S2:
Ravg <1% @ 1650 - 3000nm
Rabs <2% @ 1650 - 3000nm

4. FINE GRIND SURFACE

5. ROHS COMPLIANT



**FOR INFORMATION ONLY:
DO NOT MANUFACTURE
PARTS TO THIS DRAWING**

SPECIFICATIONS SUBJECT TO CHANGE WITHOUT NOTICE
DIMENSIONS ARE FOR REFERENCE ONLY

	S1	S2
SHAPE	PLANO	PLANO
SURFACE FLATNESS	$\lambda/10 @ 10.6\mu\text{m}$	$\lambda/10 @ 10.6\mu\text{m}$
SURFACE QUALITY	40-20	40-20
CLEAR APERTURE	$\phi 22.86$	$\phi 22.86$
BEVEL	PROTECTED AS NEEDED	PROTECTED AS NEEDED

THIRD ANGLE PROJECTION	
ALL DIMS IN	mm

TITLE	25.4mm Dia. x 5mm Thickness, BBAR (1650-3000nm) Coated, ZnSe Window		
DWG NO	24341	SHEET 15 OF 27	