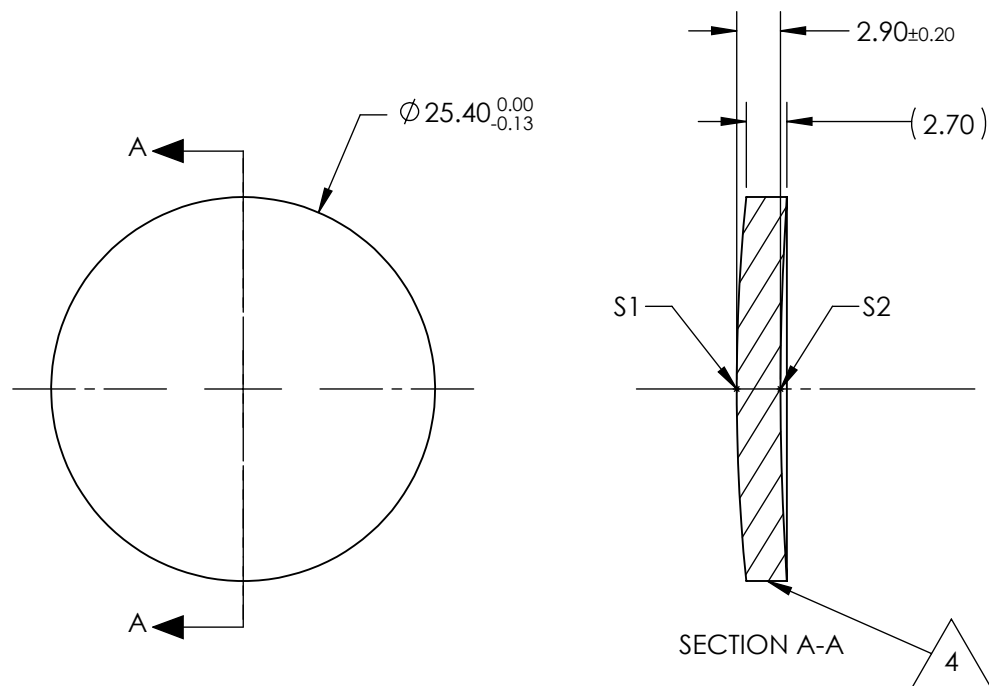


NOTES:

1. SUBSTRATE:  
Germanium (Ge)
2. CENTERING TOLERANCE:  
<3 ARCMIN
3. COATING (APPLY ACROSS CLEAR APERTURE)  
S1 & S2: NONE
4. FINE GRIND SURFACE
5. FOCAL LENGTH TOLERANCE:  $\pm 2\%$
6. ROHS COMPLIANT



**FOR INFORMATION ONLY:  
DO NOT MANUFACTURE  
PARTS TO THIS DRAWING**

	S1	S2
SHAPE	CONVEX	CONCAVE
RADIUS	127.35	187.07
IRREGULARITY AT 10.6 $\mu$ m	$\lambda/20$	$\lambda/20$
SURFACE QUALITY	60-40	60-40
CLEAR APERTURE	$\varnothing 22.86$	$\varnothing 22.86$
BEVEL	PROTECTED AS NEEDED	PROTECTED AS NEEDED

EFL @ 10.6 $\mu$ m	127
BFL @ 10.6 $\mu$ m	125.94
THIRD ANGLE PROJECTION	
ALL DIMS IN	mm

SPECIFICATIONS SUBJECT TO CHANGE WITHOUT NOTICE  
DIMENSIONS ARE FOR REFERENCE ONLY

**Edmund Optics®**

25.4mm Dia. x 127mm FL, Uncoated, ISP  
Optics Germanium (Ge) Meniscus Lens

TITLE

DWG NO

24830

SHEET  
1 OF 1