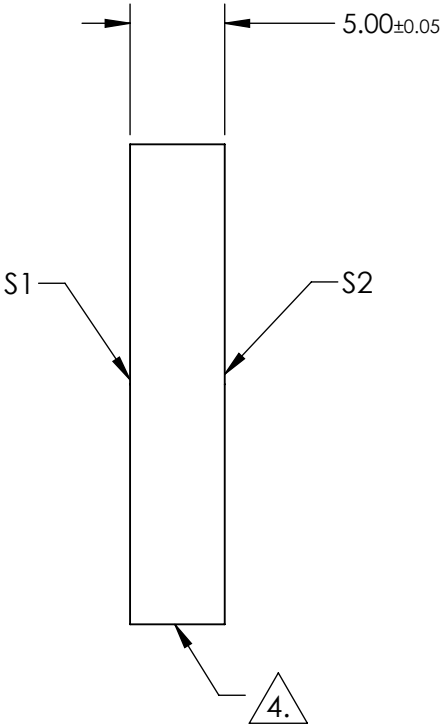
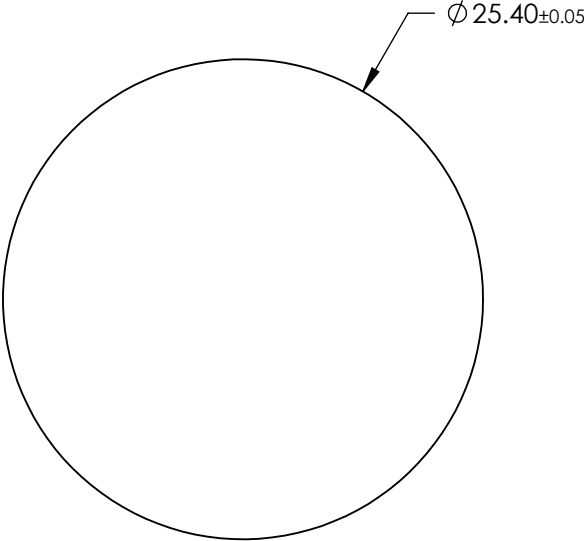
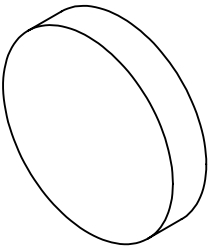


NOTES:

- 1. SUBSTRATE:
SAPPHIRE (AL2O3)
- 2. SURFACE S2 TO BE PARALLEL WITH SUFACE S1 TO WITHIN ≤ 3.5 ARMIN
- 3. COATING (APPLY ACROSS CLEAR APERTURE)
S1 & S2: R(ABS) $\leq 1.5\%$ @ 750 - 800nm
R(ABS) $\leq 1.0\%$ @ 800 - 1550nm
R(AVG) $\leq 0.7\%$ @ 750 - 1550nm

4. FINE GRIND SURFACE

- 5. ROHS COMPLIANT



**FOR INFORMATION ONLY:
DO NOT MANUFACTURE
PARTS TO THIS DRAWING**

SPECIFICATIONS SUBJECT TO CHANGE WITHOUT NOTICE
DIMENSIONS ARE FOR REFERENCE ONLY

	S1	S2
SHAPE	PLANO	PLANO
CLEAR APERTURE	$\varnothing 22.86$	$\varnothing 22.86$
SURFACE FLATNESS	2λ	2λ
SURFACE QUALITY	80-50	80-50
BIREFRINGENCE (no-ne)	0.008	0.008
BEVEL	PROTECTED AS NEEDED	PROTECTED AS NEEDED



ALL DIMS IN mm

 Edmund Optics®			
TITLE	25.4mm Dia., 5mm Thick, NIR II AR Coated Sapphire Window		
DWG NO	25421	SHEET 46 OF 70	