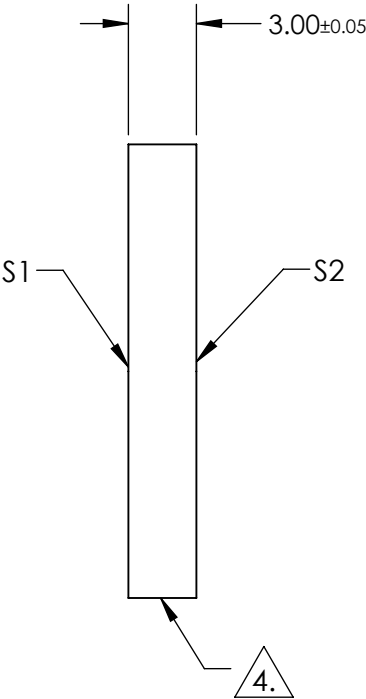
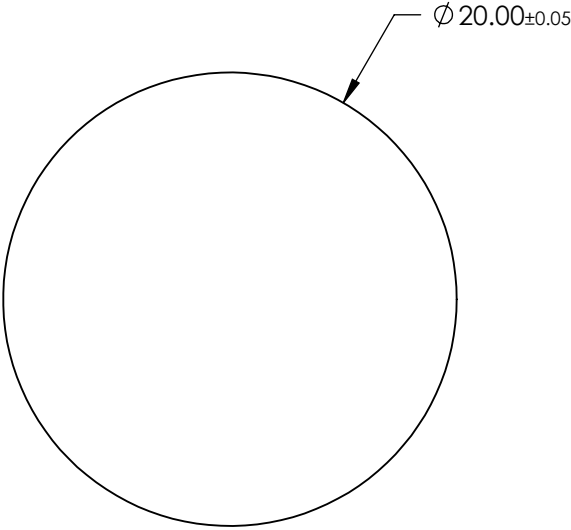
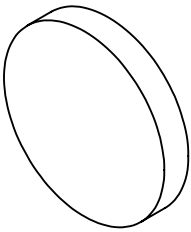


NOTES:

- 1. SUBSTRATE:
SAPPHIRE (AL2O3)
- 2. SURFACE S2 TO BE PARALLEL WITH SUFACE S1 TO WITHIN ≤ 3.5 ARMIN
- 3. COATING (APPLY ACROSS CLEAR APERTURE)
S1 & S2: R(AVG) <1.5% @ 2000-5000nm
R(ABS) <3.0% @ 2000-5000nm
R(AVG) <1.75% @ 2000-4000nm

4. FINE GRIND SURFACE

5. ROHS COMPLIANT



**FOR INFORMATION ONLY:
DO NOT MANUFACTURE
PARTS TO THIS DRAWING**

SPECIFICATIONS SUBJECT TO CHANGE WITHOUT NOTICE
DIMENSIONS ARE FOR REFERENCE ONLY

	S1	S2
SHAPE	PLANO	PLANO
CLEAR APERTURE	Ø 18.00	Ø 18.00
SURFACE FLATNESS	2λ	2λ
SURFACE QUALITY	80-50	80-50
BIREFRINGENCE (no-ne)	0.008	0.008
BEVEL	PROTECTED AS NEEDED	PROTECTED AS NEEDED

THIRD ANGLE
PROJECTION

ALL DIMS IN mm

 **Edmund Optics®**

TITLE	20mm Dia., 3mm Thick, BBAR (2000 - 5000nm) Coated Sapphire Window	
DWG NO	25440	SHEET 65 OF 70