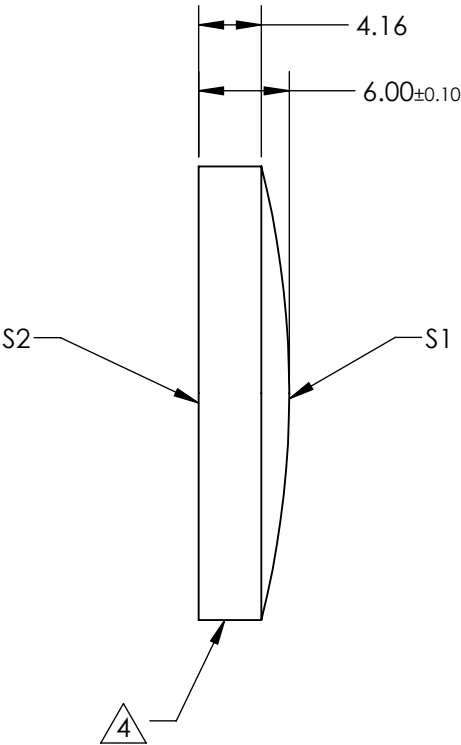
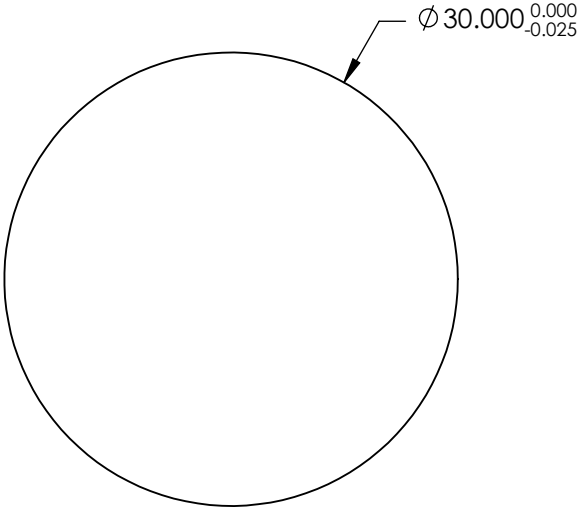


- NOTES:
- 1. SUBSTRATE: N-BK7
  - 2. ROHS COMPLIANT
  - 3. CENTERING TOLERANCE (AT 587.6nm):  
BEAM DEVIATION (HALF ANGLE): <1 ARCMIN
  - 4. COATING (APPLY ACROSS CLEAR APERTURE)  
  
S1&S2: Rabs <0.25% @ 532nm

5. FINE GRIND SURFACE

- 6. POWER, IRREGULARITY, AND SURFACE QUALITY  
SPECIFICATIONS APPLY ACROSS CLEAR APERTURE
- 7. FOCAL LENGTH (EFL): 120.00 mm±1%  
BACK FOCAL LENGTH (BFL): 116.04 mm
- 8. PROTECTIVE BEVEL AS NEEDED
- 9. DESIGN WAVELENGTH: 587.6nm



**FOR INFORMATION ONLY:  
DO NOT MANUFACTURE  
PARTS TO THIS DRAWING**

SPECIFICATIONS SUBJECT TO CHANGE WITHOUT NOTICE  
DIMENSIONS ARE FOR REFERENCE ONLY

|                 | S1                  | S2                  |
|-----------------|---------------------|---------------------|
| SHAPE           | CONVEX              | PLANO               |
| RADIUS          | 62.02               | INFINITY            |
| SURFACE QUALITY | 40-20               | 40-20               |
| CLEAR APERTURE  | Ø 29.00             | Ø 29.00             |
| BEVEL           | PROTECTED AS NEEDED | PROTECTED AS NEEDED |



ALL DIMS IN mm

**Edmund Optics®**

TITLE

30.0mm Dia. x 120.0mm FL, 532nm V-Coat,  
Plano-Convex Lens

DWG NO

26136

SHEET  
14 OF 54