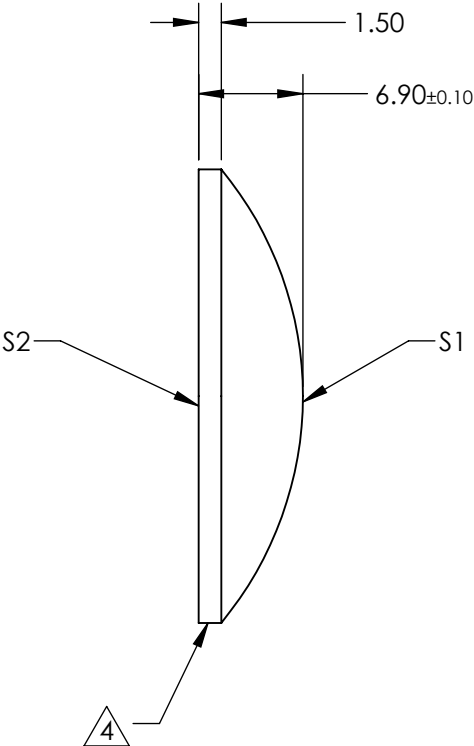
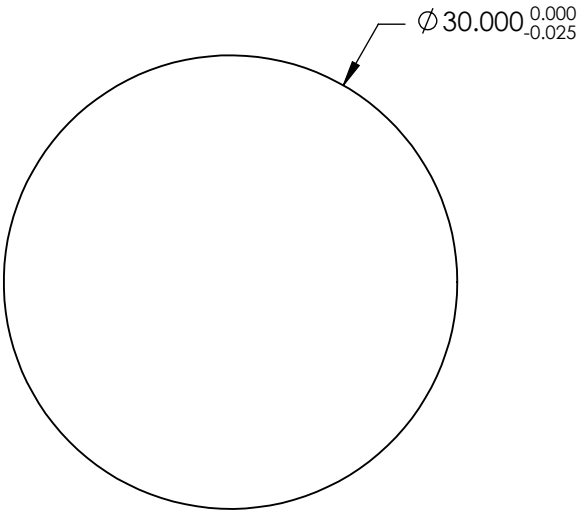


- NOTES:
- 1. SUBSTRATE: N-SF11
 - 2. ROHS COMPLIANT
 - 3. CENTERING TOLERANCE (AT 587.6nm):
BEAM DEVIATION (HALF ANGLE): <1 ARCMIN
 - 4. COATING (APPLY ACROSS CLEAR APERTURE)

S1&S2: Rabs <0.25% @ 633nm

 5. FINE GRIND SURFACE

- 6. POWER, IRREGULARITY, AND SURFACE QUALITY
SPECIFICATIONS APPLY ACROSS CLEAR APERTURE
- 7. FOCAL LENGTH (EFL): 30.00 mm±1%
BACK FOCAL LENGTH (BFL): 26.13 mm
- 8. PROTECTIVE BEVEL AS NEEDED
- 9. DESIGN WAVELENGTH: 587.6nm

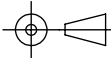


**FOR INFORMATION ONLY:
DO NOT MANUFACTURE
PARTS TO THIS DRAWING**

SPECIFICATIONS SUBJECT TO CHANGE WITHOUT NOTICE
DIMENSIONS ARE FOR REFERENCE ONLY

	S1	S2
SHAPE	CONVEX	PLANO
RADIUS	23.54	INFINITY
SURFACE QUALITY	40-20	40-20
CLEAR APERTURE	Ø 29.00	Ø 29.00
BEVEL	PROTECTED AS NEEDED	PROTECTED AS NEEDED

THIRD ANGLE
PROJECTION



ALL DIMS IN

mm



Edmund Optics®

TITLE

30.0mm Dia. x 30.0mm FL, 633nm V-Coat,
Plano-Convex Lens

DWG NO

26141

SHEET
19 OF 54