

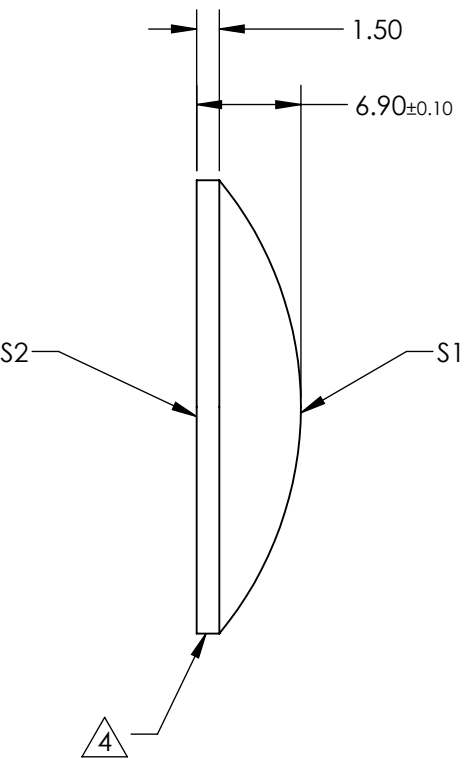
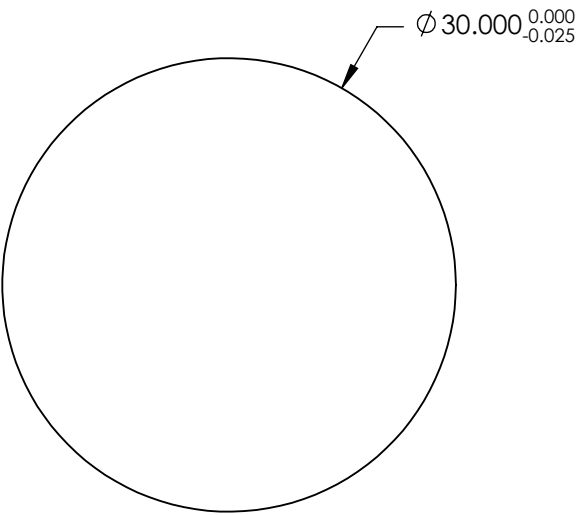
NOTES:

1. SUBSTRATE: N-SF11
2. ROHS COMPLIANT
3. CENTERING TOLERANCE (AT 587.6nm):  
BEAM DEVIATION (HALF ANGLE): <1 ARCMIN
4. COATING (APPLY ACROSS CLEAR APERTURE)

S1&S2: Rabs <0.25% @ 785nm

5. FINE GRIND SURFACE

6. POWER, IRREGULARITY, AND SURFACE QUALITY  
SPECIFICATIONS APPLY ACROSS CLEAR APERTURE
7. FOCAL LENGTH (EFL): 30.00 mm±1%  
BACK FOCAL LENGTH (BFL): 26.13 mm
8. PROTECTIVE BEVEL AS NEEDED
9. DESIGN WAVELENGTH: 587.6nm

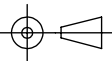


**FOR INFORMATION ONLY:  
DO NOT MANUFACTURE  
PARTS TO THIS DRAWING**

SPECIFICATIONS SUBJECT TO CHANGE WITHOUT NOTICE  
DIMENSIONS ARE FOR REFERENCE ONLY

	S1	S2
SHAPE	CONVEX	PLANO
RADIUS	23.54	INFINITY
SURFACE QUALITY	40-20	40-20
CLEAR APERTURE	Ø 29.00	Ø 29.00
BEVEL	PROTECTED AS NEEDED	PROTECTED AS NEEDED

THIRD ANGLE  
PROJECTION



ALL DIMS IN

mm

**EO**® Edmund Optics®

TITLE

30.0mm Dia. x 30.0mm FL, 785nm V-Coat,  
Plano-Convex Lens

DWG NO

26150

SHEET  
28 OF 54