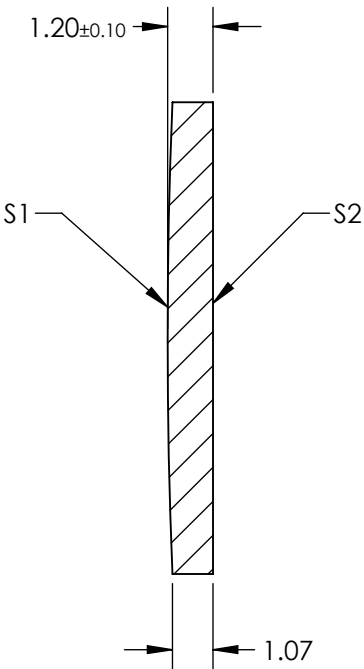
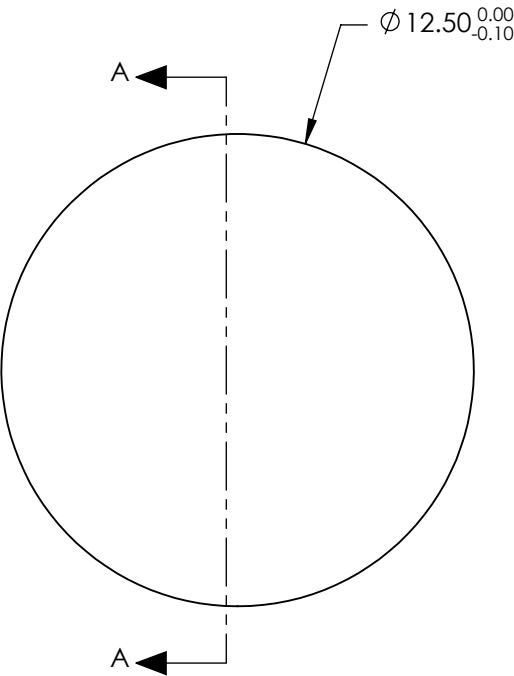


NOTES:

- 1. SUBSTRATE: GERMANIUM
- 2. COATING (APPLY ACROSS CLEAR APERTURE)  
S1 & S2: Ravg <5.0% @ 3 - 12µm
- 3. EDGES: FINE GROUND
- 4. CENTERING: <3 ARMIN
- 5. ROHS COMPLIANT



**FOR INFORMATION ONLY:  
DO NOT MANUFACTURE  
PARTS TO THIS DRAWING**

SPECIFICATIONS SUBJECT TO CHANGE WITHOUT NOTICE  
DIMENSIONS ARE FOR REFERENCE ONLY

	S1	S2
SHAPE	CONVEX	PLANO
RADIUS	150.2	∞
SURFACE QUALITY	60 - 40	60 - 40
CLEAR APERTURE	Ø 11.25	Ø 11.25
BEVEL	PROTECTED AS NEEDED	PROTECTED AS NEEDED

THIRD ANGLE  
PROJECTION

ALL DIMS IN      mm

 <b>Edmund Optics®</b>			
TITLE		12.5mm Dia. x 50mm FL, 3 - 12µm Coated, Ge Plano-Convex Lens	
DWG NO		25567	SHEET 12 OF 12