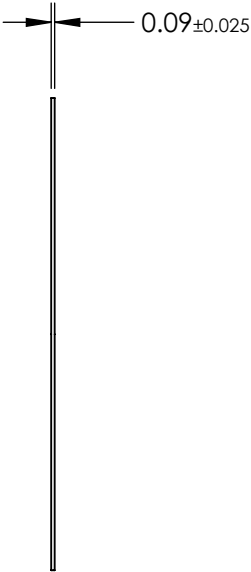
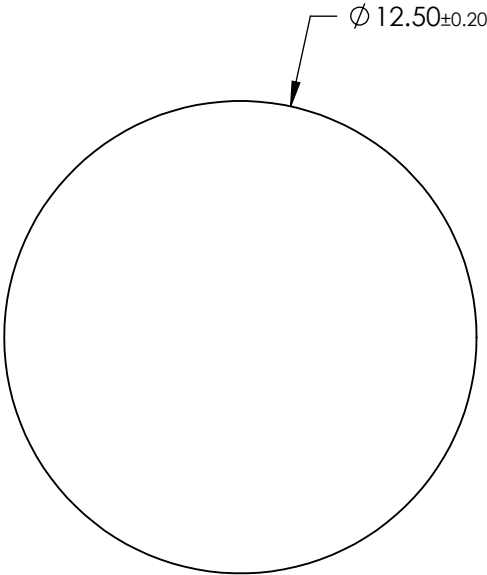
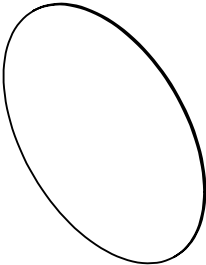


- NOTES:
- 1. SUBSTRATE: SODIUM SILICATE GLASS DOPED WITH SILVER NANOPARTICLES
  - 2. COATING: Double-Side AR
  - 3. TYPICAL ENERGY DENSITY LIMIT: 10 W/cm2
  - 4. EXTINCTION RATIO: >10,000:1
  - 5. WAVELENGTH RANGE: 1500-1600
  - 6. ROHS COMPLIANT



**FOR INFORMATION ONLY:**  
**DO NOT MANUFACTURE**  
**PARTS TO THIS DRAWING**

SPECIFICATIONS SUBJECT TO CHANGE WITHOUT NOTICE  
DIMENSIONS ARE FOR REFERENCE ONLY

	S1	S2
SHAPE	PLANO	PLANO
SURFACE QUALITY	40 - 20	40 - 20
TRANSMISSION (%)	>96	>96
ACCEPTANCE ANGLE	$\pm 20^\circ$	$\pm 20^\circ$
BEVEL MAX FACE	PROTECTED AS NEEDED	PROTECTED AS NEEDED

THIRD ANGLE  
PROJECTION

ALL DIMS IN

mm

 **Edmund Optics®**

TITLE

Ultra-Thin Polarizer, 1550nm, 12.5mm Dia, AR

DWG NO

26654

SHEET

11 OF 12