

NOTES:
1. SUBSTRATE:
FUSED SILICA

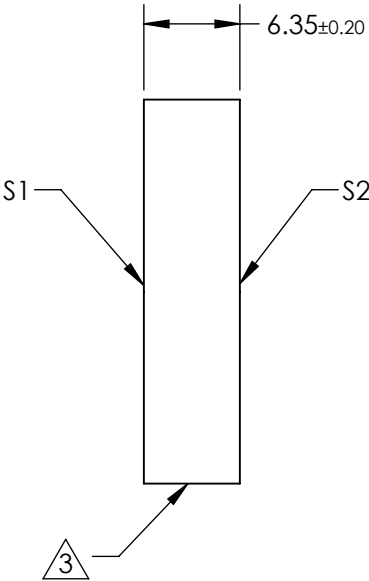
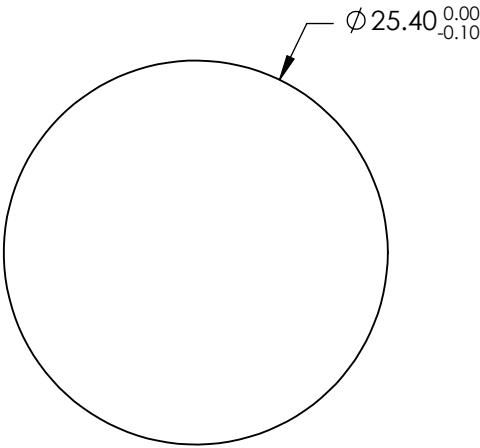
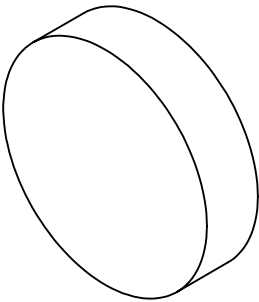
2. COATING (APPLY ACROSS CLEAR APERTURE)
S1: Ultrafast (990-1070nm)
R(AVG) S&P > 99.90% @ 1030nm
R(AVG)> 99.7% @ 990 – 1070nm

GDD SPECIFICATION: ±20 fs²@ 990 - 1070nm @ 45° AOI

S2: NONE

3. FINE GRIND SURFACE

4. ROHS COMPLIANT



**FOR INFORMATION ONLY:
DO NOT MANUFACTURE
PARTS TO THIS DRAWING**

SPECIFICATIONS SUBJECT TO CHANGE WITHOUT NOTICE
DIMENSIONS ARE FOR REFERENCE ONLY

	S1	S2
SHAPE	PLANO	PLANO
SURFACE QUALITY	10 - 5	COMMERCIAL POLISH
CLEAR APERTURE	Ø 22.86	N/A
SURFACE FLATNESS	λ/8	N/A
BEVEL	PROTECTED AS NEEDED	PROTECTED AS NEEDED

THIRD ANGLE
PROJECTION

ALL DIMS IN mm

 **Edmund Optics®**

TITLE	Low-GDD Ultrafast Dielectric Mirror, 1030nm, 45° AOI, 25.4mm Dia., 6.35mm Thick		
DWG NO	26836	SHEET	14 OF 24